

Service
Service
Service



Service Manual



TABLE OF CONTENTS

	Page
LOCATION OF PCBS	1
Specifications	1
Service AIDS & CD playability	2
Connection & Controls	3
Disassembly Instructions	4
Block & Wiring diagrams	5
DISPLAY BOARD	6
MPEG BOARD	7
SCART BOARD	8
USB & KEY BOARD	9
AMP BOARD	10
SMPS BOARD	11
EXPLODE DIAGRAM	12
SERVICE PARTLIST	13
FACTORY PARTLIST	14

© Copyright 2007 Philips Consumer Electronics B.V. Eindhoven, The Netherlands
 All rights reserved. No part of this publication may be reproduced, stored in a retrieval system or transmitted, in any form or by any means, electronic, mechanical, photocopying, or otherwise without the prior permission of Philips.

Published by DB Service Audio Printed in The Netherlands Subject to modification

3141 785 32163

Version 1.3



PHILIPS

TECHNICAL SPECIFICATIONS

AMPLIFIER

Output power 2 x 50 W + 100 W RMS
 Signal-to-noise ratio ≥ 60 dBA
 Frequency response 63 – 20000 Hz, ± 3 dB
 Input sensitivity AUX 0.9 V (max. 2 V)
 Impedance loudspeakers 4 Ω

DVD PLAYER

Laser Type Semiconductor
 Disc Diameter 12cm / 8cm
 Video Decoding MPEG-2 / MPEG-1
 Video DAC 10 Bits
 Signal System PAL / NTSC
 Video Format 4:3 / 16:9
 Video S/N 56 dB (minimum)
 Composite Video Output 1.0 Vp-p, 75 Ω
 Audio DAC 24 Bits / 96 kHz
 Frequency Response ... 4 Hz - 20 kHz (44.1kHz)
 4 Hz - 22 kHz (48kHz)
 4 Hz - 44 kHz (96kHz)
 Number of programmable tracks 16
 Signal-to-noise ratio ≥ 65 dBA
 Channel separation ≥ 40 dB (1 kHz)
 Total harmonic distortion $< 0.1\%$ (1 kHz)

USB PLAYER

USB 12Mb/s, V1.1
 support MP3 and WMA files
 Number of albums/folders maximum 99
 Number of tracks/titles maximum 999

TUNER

FM wave range 87.5 – 108 MHz
 Sensitivity at 75 Ω
 – mono, 26 dB signal-to-noise ratio 2.8 μ V
 – stereo, 46 dB signal-to-noise ratio 61.4 μ V
 Selectivity ≥ 28 dB
 Total harmonic distortion $\leq 5\%$
 Frequency response 63 – 5500 Hz (-6 dB)
 Signal-to-noise-ratio ≥ 50 dBA

SPEAKERS

2-way bass reflex system
 Dimensions (w x h x d)
 125 x 250 x 232 (mm)

SUBWOOFER

Impedance 6 Ω
 Speaker driver 5.25" subwoofer
 Frequency response 60 Hz – 1 KHz
 Dimensions(w x h x d) . 147 x 250 x 232 (mm)
 Weight 2.4kg

GENERAL INFORMATION

AC Power 220 – 240 V / 50 Hz
 Dimensions (w x h x d) . 218 x 90 x 221.5 (mm)
 Weight (with/without speakers) 4.7 / 1.1 kg
 Standby power consumption ≤ 6 W
 Eco power Standby < 1 W

Specifications and external appearance are subject to change without notice.

SERVICE TOOLS

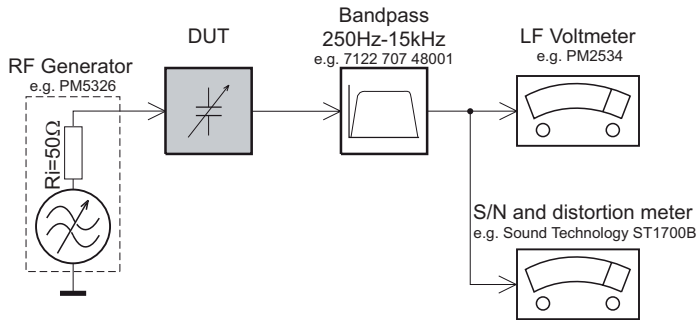
Audio signal disc SBC 429 4822 397 30184
 Playability test disc SBC 444 4822 397 30245
 Test disc 5 (disc without errors) +
 Test disc 5A (disc with dropout errors, black spots and fingerprints)
 SBC 426/426A 4822 397 30096
 Burn in test disc (65 min. 1kHz signal at -30 dB level without "pause") 4822 397 30155

AVAILABLE ESD PROTECTION EQUIPMENT

anti-static table mat	large 1200x650x1.25mm	4822 466 10953
	small 600x650x1.25m	4822 466 10958
anti-static wristband		4822 395 10223
connection box (3 press stud connections, 1M Ω)		4822 320 11307
extendible cable (2m, 2M Ω , to connect wristband to connection box)		4822 320 11305
connecting cable (3m, 2M Ω , to connect table mat to connection box)		4822 320 11306
earth cable (1M Ω , to connect any product to mat or to connection box)		4822 320 11308
KIT ESD3 (combining all 6 prior products - small table mat)		4822 310 10671
wristband tester		4822 344 13999

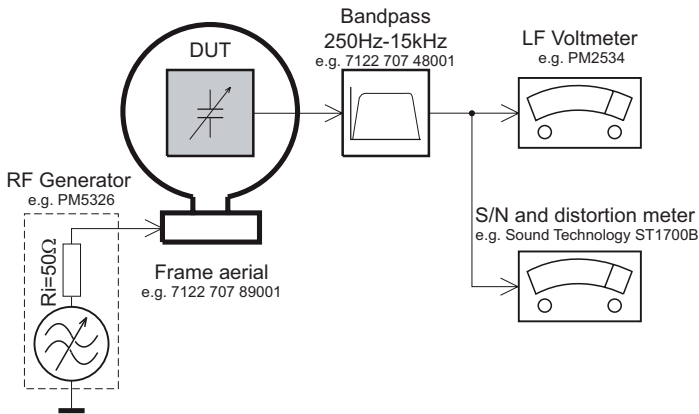
MEASUREMENT SETUP

Tuner FM



Use a bandpass filter to eliminate hum (50Hz, 100Hz) and disturbance from the pilotone (19kHz, 38kHz).

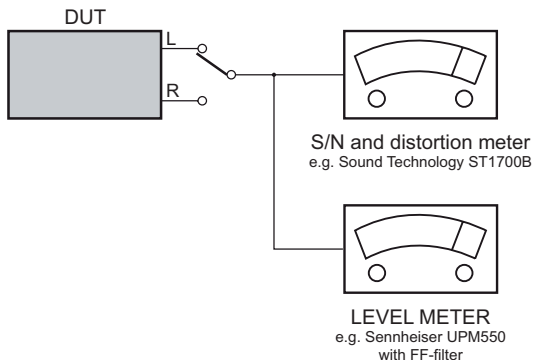
Tuner AM (MW,LW)



To avoid atmospheric interference all AM-measurements have to be carried out in a Faraday's cage.
Use a bandpass filter (or at least a high pass filter with 250Hz) to eliminate hum (50Hz, 100Hz).

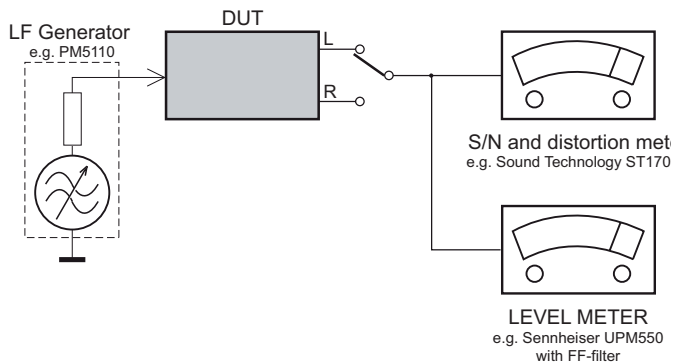
CD

Use Audio Signal Disc SBC429 4822 397 30184
(replaces test disc 3)



Recorder

Use Universal Test Cassette Cr02 SBC419 4822 397 30069
or Universal Test Cassette Fe SBC420 4822 397 30071



SERVICE AIDS

GB WARNING

All ICs and many other semi-conductors are susceptible to electrostatic discharges (ESD). Careless handling during repair can reduce life drastically.

When repairing, make sure that you are connected with the same potential as the mass of the set via a wrist wrap with resistance. Keep components and tools also at this potential.

ESD



GB

Safety regulations require that the set be restored to its original condition and that parts which are identical with those specified, be used

Safety components are marked by the symbol .

**CLASS 1
LASER PRODUCT**

INFORMATION ABOUT LEAD-FREE SOLDERING

Philips CE is producing lead-free sets from 1.1.2005 onwards.

IDENTIFICATION:

Regardless of special logo (not always indicated) one must treat all sets from 1 Jan 2005 onwards, according next rules:



- On our website www.atyourservice.ce.Philips.com you find more information to:
 - * BGA-de-/soldering (+ baking instructions)
 - * Heating-profiles of BGAs and other ICs used in Philips-sets
 - * Lead free

You will find this and more technical information within the "magazine", chapter "workshop news".

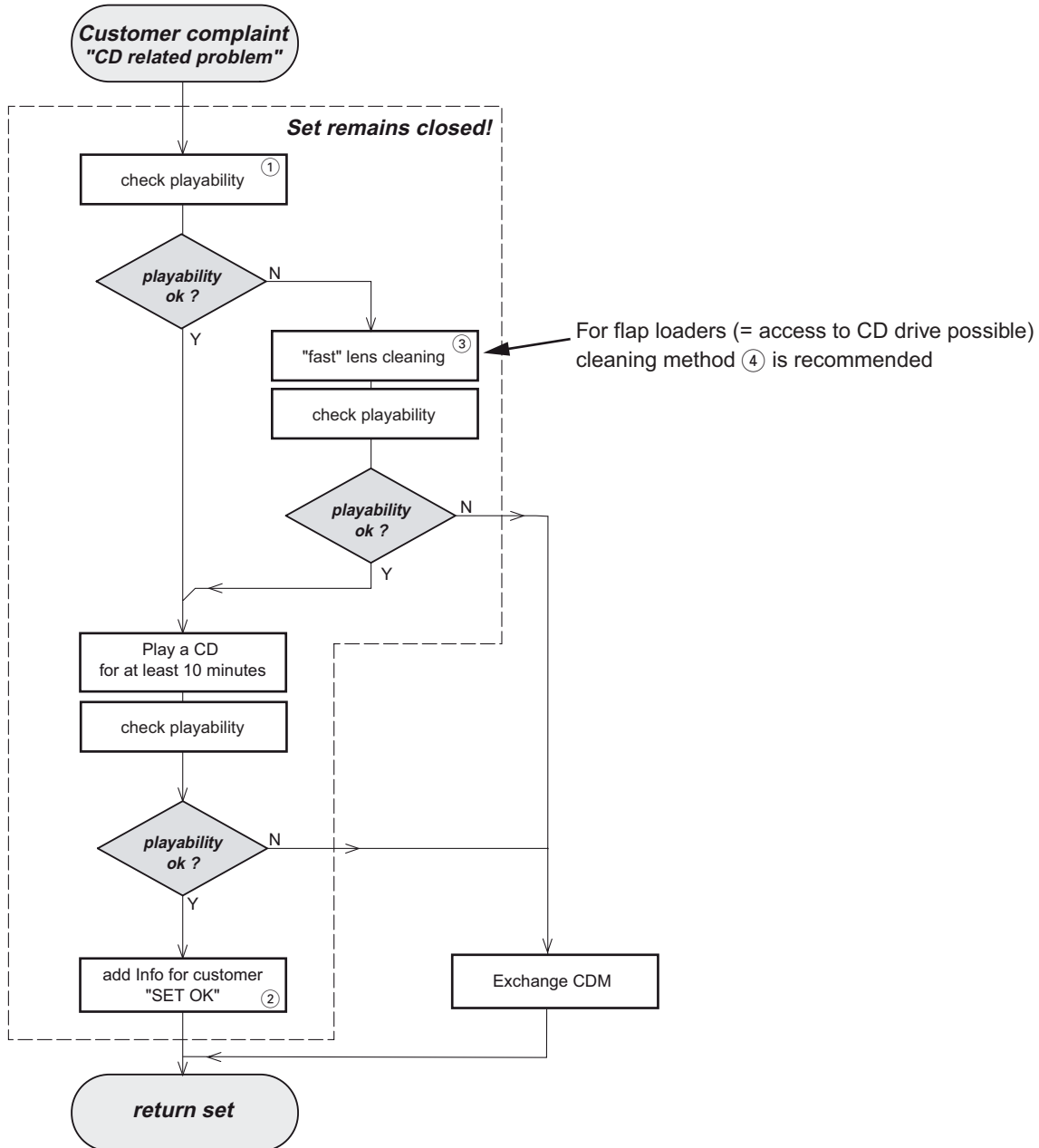
For additional questions please contact your local repair-helpdesk.

SERVICE INSTRUCTION

Safety regulations require that after a repair, the set must be returned in its original condition. Pay in particular attention to the following points:

- Route the wire trees correctly and fix them with the mounted cable clamps.
- Check the insulation of the AC Power lead for external damage.
- Check the strain relief of the AC Power cord for proper function.
- Check the electrical DC resistance between the AC Power Plug and the secondary side (only for sets which have a AC Power isolated power supply):
 1. Unplug the AC Power cord and connect a wire between the two pins of the AC Power plug.
 2. Set the AC Power switch to the "on" position (keep the AC Power cord unplugged!).
 3. Measure the resistance value between the pins of the AC Power plug and the metal shielding of the tuner or the aerial connection on the set. The reading should be larger than 4.5 Mohm (For U.S. it should be between 4.2 Mohm and 12 Mohm).
 4. Switch "off" the set, and remove the wire between the two pins of the AC Power plug.
- Check the cabinet for defects, to avoid touching of any inner parts by the customer.

INSTRUCTIONS ON CD PLAYABILITY



① - ④ For description - see following pages

INSTRUCTIONS ON CD PLAYABILITY

①

PLAYABILITY CHECK

For sets which are compatible with **CD-RW** discs
 use CD-RW Printed Audio Disc.....7104 099 96611
 TR 3 (Fingerprint)
 TR 8 (600µ Black dot) **maximum at 01:00**

- playback of these two tracks without audible disturbance
 playing time for: Fingerprint ≥ 10 seconds
 Black dot from 00:50 to 01:10
- jump forward/backward (search) within a reasonable time

For all other sets
 use CD-DA SBC 444A.....4822 397 30245
 TR 14 (600µ Black dot) **maximum at 01:15**
 TR 19 (Fingerprint)
 TR 10 (1000µ wedge)

- playback of all these tracks without audible disturbance
 playing time for: 1000µ wedge ≥ 10 seconds
 Fingerprint ≥ 10 seconds
 Black dot from 01:05 to 01:25
- jump forward/backward (search) within a reasonable time

②

CUSTOMER INFORMATION

It is proposed to add an addendum sheet to the set which informs the customer that the set has been checked carefully - but no fault was found.

The problem was obviously caused by a scratched, dirty or copy-protected CD. In case problems remain, the customer is requested to contact the workshop directly.

The lens cleaning (method ④) should be mentioned in the addendum sheet.

The final wording in national language as well as the printing is under responsibility of the Regional Service Organizations.

④

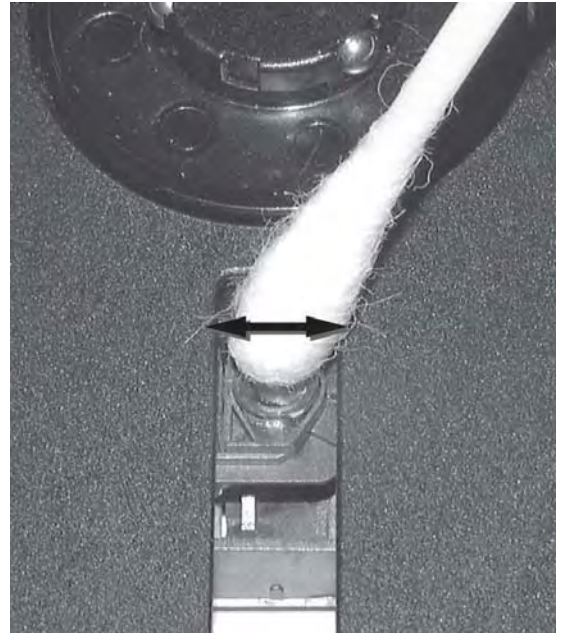
LIQUID LENS CLEANING

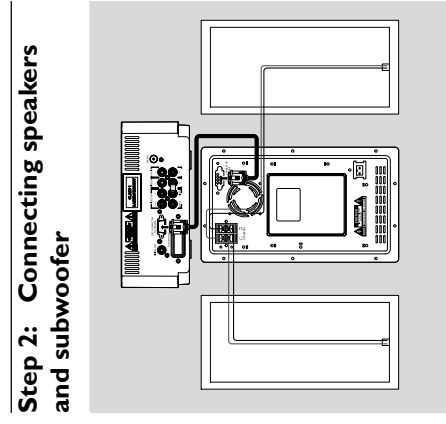
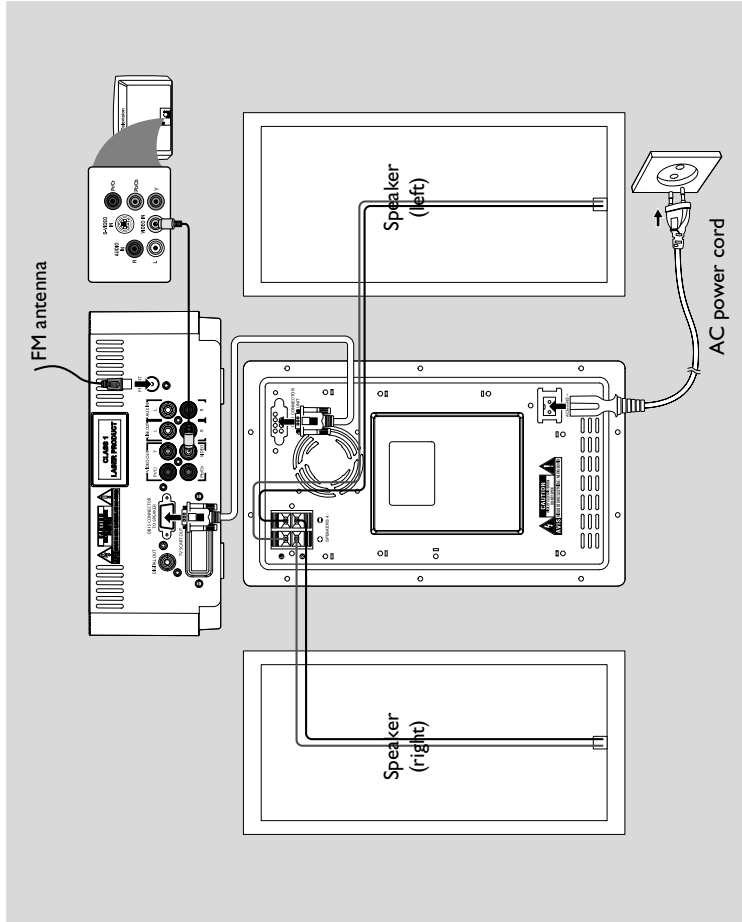
Before touching the lens it is advised to clean the surface of the lens by blowing clean air over it. This to avoid that little particles make scratches on the lens.

Because the material of the lens is synthetic and coated with a special anti-reflectivity layer, cleaning must be done with a non-aggressive cleaning fluid. It is advised to use "Cleaning Solvent

The actuator is a very precise mechanical component and may not be damaged in order to guarantee its full function. Clean the lens gently (don't press too hard) with a soft and clean cotton bud moistened with the special lens cleaner.

The direction of cleaning must be in the way as indicated in the picture below.



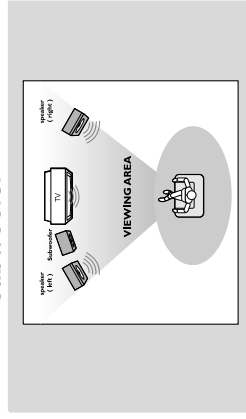


- Connect the supplied DB15 cable to DVD player's **DB15 CONNECTOR TO SPEAKER** jack and the Subwoofer's **DB15 CONNECTOR TO MAIN UNIT** jack.
- Connect the speaker wires to the **SPEAKER** terminals on the subwoofer, right speaker to "R" and left speaker to "L", coloured (marked) wire to "+" and black (unmarked) wire to "-". Fully insert the stripped portion of the speaker wire into the terminal as shown.

IMPORTANT!

- The type plate is located at the rear of the system.
 - Before connecting the AC power cord to the wall outlet, ensure that all other connections have been made.
 - Never make or change any connections with the power switched on.
 - High voltage! Do not open. You run the risk of getting an electric shock.
 - The machine does not contain any user-serviceable parts.
 - Modification of the product could result in hazardous radiation of EMC or other unsafe operation.
- To avoid overheating of the system, a safety circuit has been built in. Therefore, your system may switch to Standby mode automatically under extreme conditions. If this happens, let the system cool down before reusing it (not available for all versions).

Step 1: Placing speakers and subwoofer

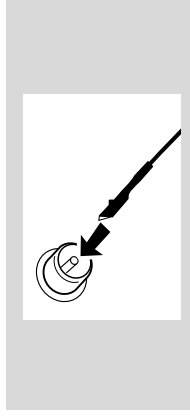


- For best possible surround sound, locate your speakers and subwoofer as follows:
- Place the left and right speakers at equal distances from the TV set and at an angle of approximately 45 degrees from the listening position.
 - Place the subwoofer on the floor.
- Notes:
- To avoid magnetic interference, do not position the front speakers too close to your TV set.

Step 3: Antenna connection

Connect the supplied FM antenna to the respective terminal. Adjust the position of the antenna for optimal reception.

FM Antenna



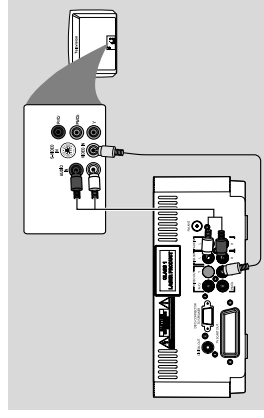
- For better FM stereo reception, connect an outdoor FM antenna to the FM AERIAL (FM ANTENNA) terminal.

Step 4: Connecting TV

IMPORTANT!

- You only need to make one video connection from the following options, depending on the capabilities of your TV system.
- Connect the DVD system directly to the TV.

Using Video In jack (CVBS)



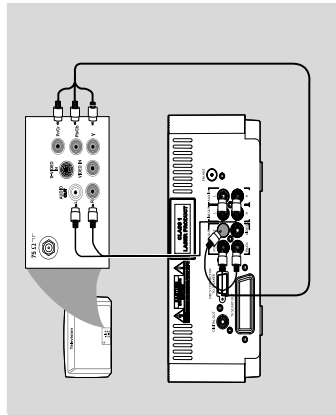
- 1 Use the composite video cable (yellow) to connect the system's **VIDEO** jack to the video input jack (or labelled as AV In, Video In, Composite or Baseband) on the TV set.
- 2 To hear the sound of this DVD Player through your TV, use the audio cables (white/red-not supplied) to connect **LINE OUT (L/R)** jacks of the DVD Player to the corresponding **AUDIO IN** jacks on the TV.

CONNECTION AND CONTROLS

Connections

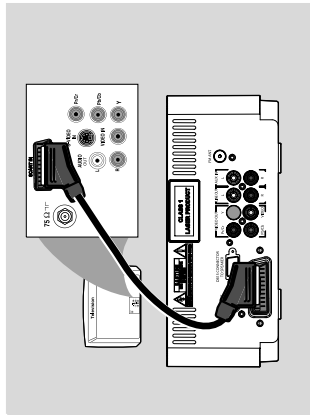
Using component Video In jack (Pr PbY)

- Use the component video cables (red/blue/green, not supplied) to connect the system's **PR/PB/Y** jacks to the corresponding Component video input jacks (or labeled as Pr/Cr/Pb/Cb Y or YUV) on the TV set.
- To listen to TV channels through this system, use the audio cables (white/red) to connect **AUX IN (L/R)** jacks to the corresponding **AUDIO OUT** jacks on the TV set.



Using Scart jack

- 1 Use the scart cable (not supplied) to connect the system's **TV SCART OUT** jack to the corresponding SCART input jacks on the TV set.



- 2 To listen to TV channels through this system, use the scart cable (not supplied) to connect the system's **TV SCART OUT** jack to the corresponding SCART output jack on the TV set.

- Before starting operation, press **AUX** on the remote control to select "TV" in order to activate the input source. The music will be heard through the speakers.

Connections

Step 5: Connecting the power cord

IMPORTANT!

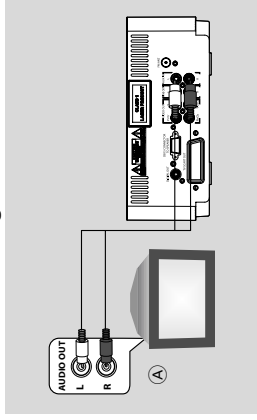
- Never make or change any connection with the power switched on.

the AC power cord to the system and then to the power outlet.

Optional: Connecting additional equipment

IMPORTANT!

- Some discs are copy-protected. You cannot record the disc through a VCR or digital recording device.
- When making connections, make sure the colour of cables matches the colour of jacks.
- Always refer to the owner's manual of the other equipment for complete connection and usage details.



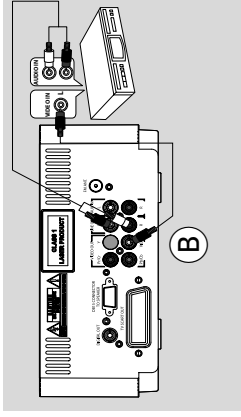
Listening to the playback of other equipment (A)

Use a cinch cable (not supplied) to connect **AUX** on the rear panel of the DVD player to the analogue audio out terminals of an external equipment (TV, VCR, Laser Disc player, DVD player or CD Recorder).

Before starting operation, press **SOURCE** on the front panel to select **AUX** or press **AUX** on the remote in order to activate the input source.

Note:

- If you are connecting equipment with a mono output (a single audio out terminal), connect it to the **AUX** left terminal. Alternatively, you can use a "single to double" cinch cable (the output sound still remain mono).



Using the VCR for recording DVDs (B)

Connect one of the system's **VIDEO OUT** jacks to the corresponding **VIDEO IN** jack and **LINE OUT (R/L)** jacks to the **AUDIO IN** jacks on the VCR. This will allow you to make analogue stereo (two channel, right and left) recordings.

Connecting a USB device or memory card

By connecting a USB mass storage device (including USB flash memory, USB flash players or memory cards) to the system, you can enjoy the device's stored music through the powerful speakers of the system.

- Insert the USB device's USB plug into the USB socket on the set.

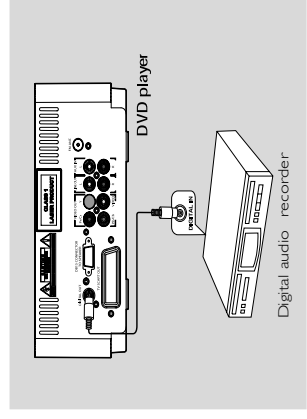
for the devices with USB cables:

- 1 Insert one plug of the USB cable (not supplied) to the USB socket on the set.
- 2 Insert the other plug of the USB cable to the USB output terminal of the USB device.

for the memory card:

- 1 Insert the memory card into a card reader (not supplied).
- 2 Use a USB cable (not supplied) to connect the card reader into the USB socket on the set.

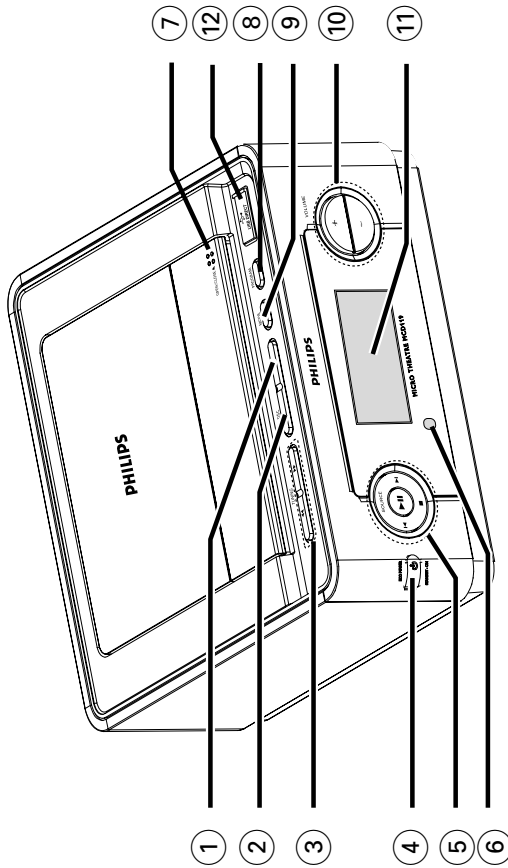
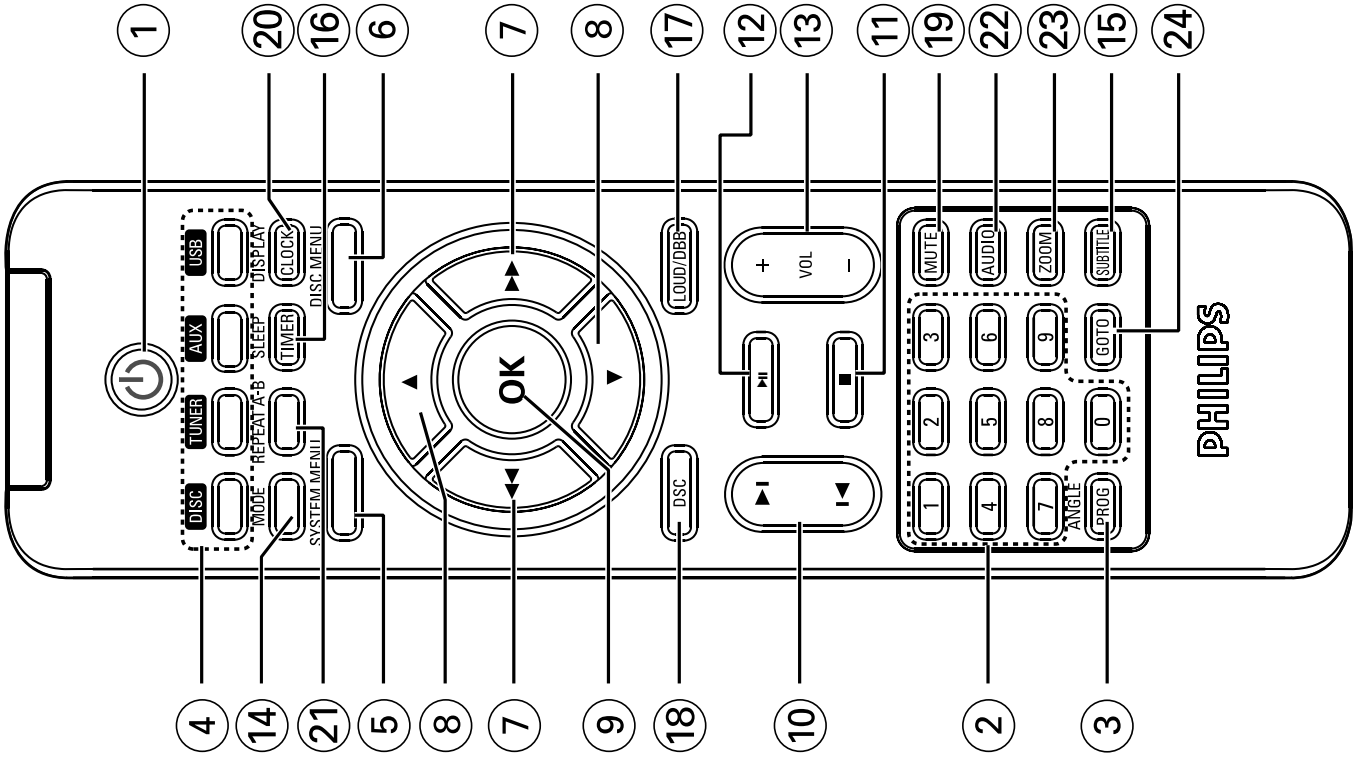
Step 6: Connecting digital audio equipment



CONNECTION AND CONTROLS

Controls

Controls



Controls on the system

- ① **DBB**
enables or disables bass enhancement.
- ② **DSC**
selects different types of preset sound equalizer settings.
- ③ **TUNING** ◀◀ / ▶▶
Tuner searches for a radio station
Disc fast searches backward/forward in a disc at different speeds.
- ④ **ECO POWER/STANDBY-ON** ⏻
switches the system on or to Eco-power standby /normal standby mode.
- ⑤ **▶ II**
Disc starts or interrupts disc playback
Tuner activates the plug and play function
- SOURCE**
selects the respective sound source: DISC, USB, TUNER (FM), or AUX.
◀ / ▶
Disc press to skip to the previous/ next chapter/title/track.
Tuner selects a preset radio station
- stops disc playback or erases a program.
- ⑥ **IR Sensor**
point the remote control towards this sensor.
- ⑦ **OPEN/CLOSE**
opens or closes the disc door.
- ⑧ **PROGRAM**
Tuner program the favourite stations.
Tuner press and hold to start automatic preset programming.
Disc/USB program the favourite tracks.
- ⑨ **MODE**
selects various repeat/shuffle play modes (For VCD with PBC feature, PBC must be turned off)
- ⑩ **VOLUME +/-**
adjusts the volume upward/downward.
Clock
sets the clock time
- ⑪ **Display**
shows the current status of the DVD player.
- ⑫ **USB DIRECT**
jack for the external USB mass storage device.

Controls on the remote control

- ① ⏻
to switch the system on or to Eco-power standby/normal standby mode.
- ② **Numeric Keypad (0-9)**
inputs a track/title/chapter number of the disc.
- ③ **PROG/ANGLE**
VCD/CD/MP3-CD: enters the program menu.
Tuner: programs preset radio stations.
DVD: selects a DVD camera angle.
- ④ **SOURCE**
to select the respective sound source: DISC, USB, TUNER or AUX.
- ⑤ **SYSTEM MENU** (disc mode only)
to enter or exit the system menu bar.
- ⑥ **DISC MENU** (disc mode only)
DVD/VCD: enters or exits the disc contents menu.
VCD2.0: switches the playback control mode on or off.
- ⑦ ◀◀ / ▶▶
Tuner
press to tune to a lower/higher radio frequency gradually.
press and hold, then release the key to start automatic search for a radio frequency downward/upward.
Disc
moves an enlarged picture left/right.
(not for MP3 CD) searches backward/forward in a disc at different speeds.
In DISC mode, to select a movement direction in the disc menu or system menu bar.
Picture CD
rotates a picture clockwise or counterclockwise.
- ⑧ ▲▼
moves an enlarged picture up/down.
In DISC mode, to select a movement direction in the disc menu or system menu bar.
- ▲
selects different slow backward playback modes for DVD.
- ▼
selects different slow forward playback modes for DVD.
- ⑨ **OK**
to exit or confirm the selection.

⑫ REPEAT A-B

- for VCD/CD: to repeat a specific section within the same track.
- for DVD: to repeat a specific section in a disc.

⑬ AUDIO

- for VCD
sets Stereo, Mono-Left or Mono-Right sound mode.
- for DVD
selects an audio language.

⑭ ZOOM

- DVD/VCD/Picture CD: enlarges or reduces a picture or active image on the TV screen.

⑮ GOTO

- In DISC mode, to fast search in a disc by entering a time, title, chapter or track.

Notes for remote control:

- First, select the source you wish to control by pressing one of the source select keys on the remote control (DISC or TUNER, for example).
- Then select the desired function (▶II, ◀, ▶I for example).

⑯ ◀ / ▶

- Disc: skips to the previous/next chapter/title/ track.
- Tuner: selects a preset radio station.

⑰ ■

- In DISC mode, to stop playback or clear a program.

⑱ ▶ II

- In DISC mode, to start or interrupt playback.
- In TUNER mode, to activate the plug and play function.

⑲ VOL +/-

- adjusts the volume upward/downward.
- adjusts the hours and minutes in clock/timer setting mode.

⑳ MODE

- to select various repeat modes or the shuffle play mode for a disc.

㉑ SUBTITLE

- selects a subtitle language.

㉒ SLEEP/TIMER

- Standby mode
- * – sets a time for switching on the system automatically.
- Power-on mode
- sets the sleep timer function (auto-off).

㉓ LOUD/DBB

- enables or disables automatic loudness adjustment.
- * – enables or disables bass enhancement.

㉔ DSC

- selects different types of preset sound equalizer settings (ROCK, JAZZ, POP, CLASSIC, or OFF).

㉕ MUTE

- to interrupt or resume sound reproduction.

㉖ DISPLAY/CLOCK

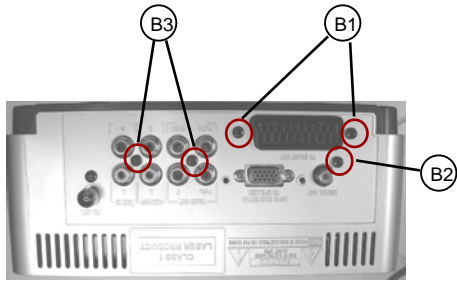
- for disc
displays the disc information on the TV screen.
for clock
sets the system clock.
- * – sets the system clock.

DISASSEMBLY DIADRAMS

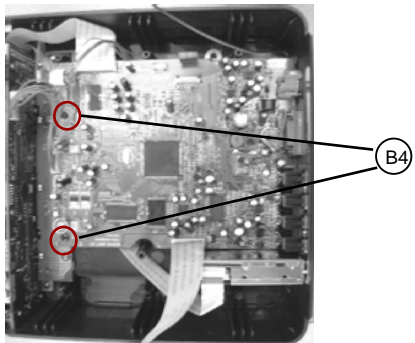
A. Remove Bottom CAB
Remove screw 3x12 - 6 pcs



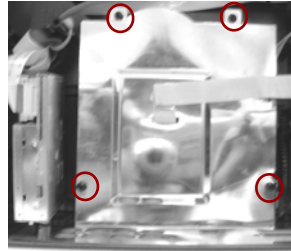
B. Remove Scart board & Main board
B1: Remove screws 2x15 - 2 pcs.
B2: Remove screws 3x8 - 1 pcs.
B3: Remove screws 3x10 - 2 pcs.



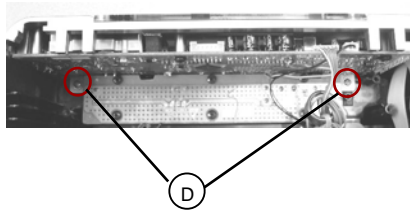
B4: Remove screws 3x10 - 2 pcs.



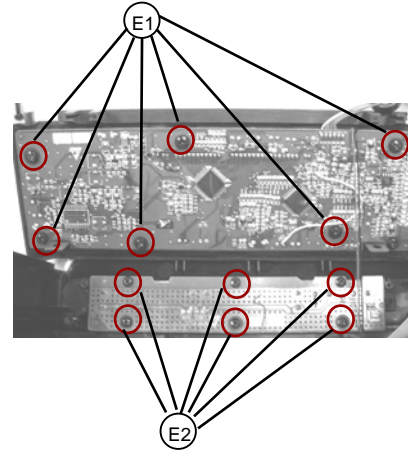
C. Remove Dust cover
Remove screws 2x8 - 4 pcs.



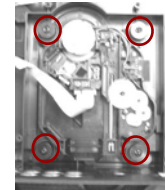
D. Remove Front assembly
Remove screws 2x8 - 2 pcs.



E. Remove Display & Key board
E1: Remove screws 3x10 - 6 pcs.
E2: Remove screws 2x8 - 6 pcs.



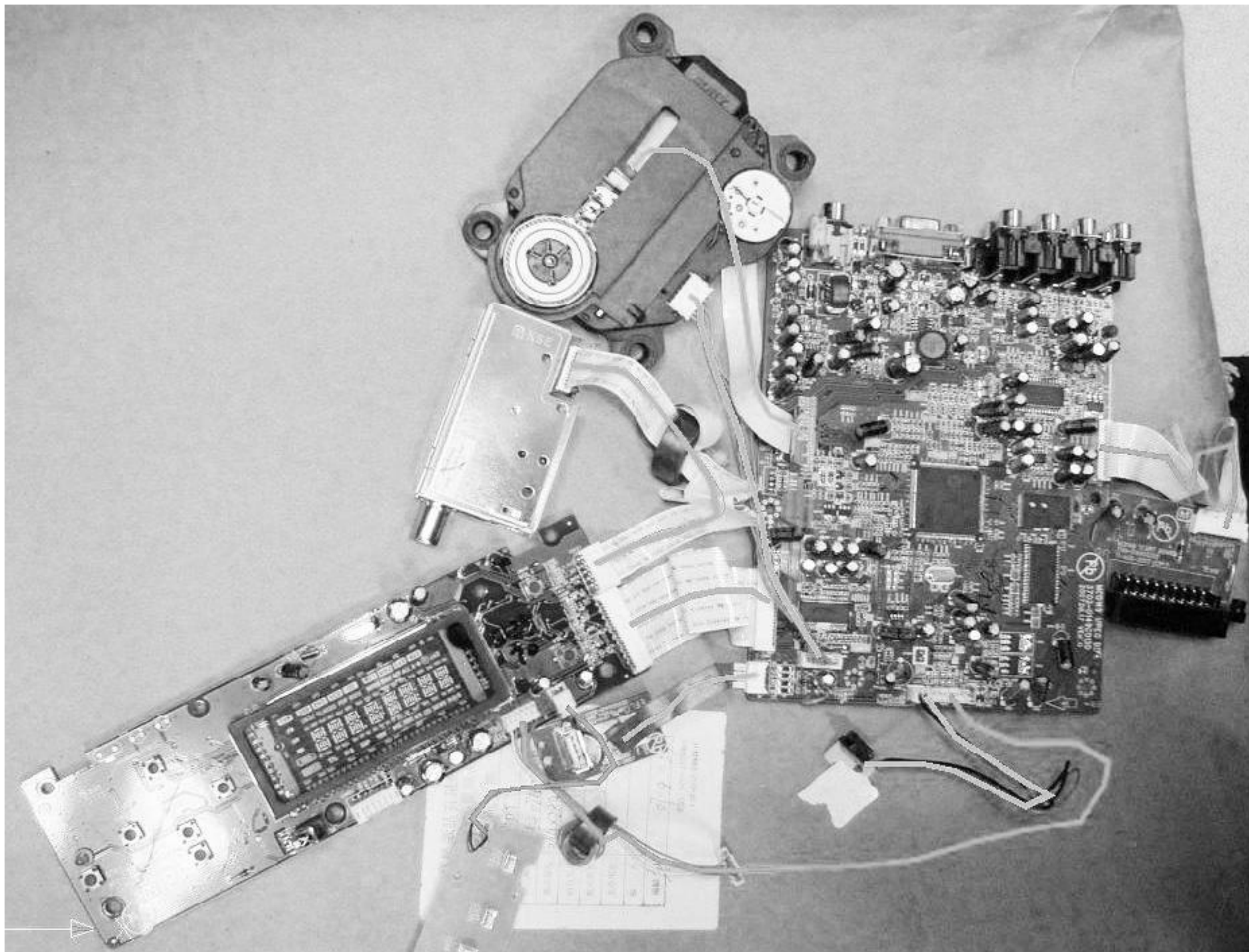
F. Remove CD mechanism
Remove screws 3x10 - 4 pcs.



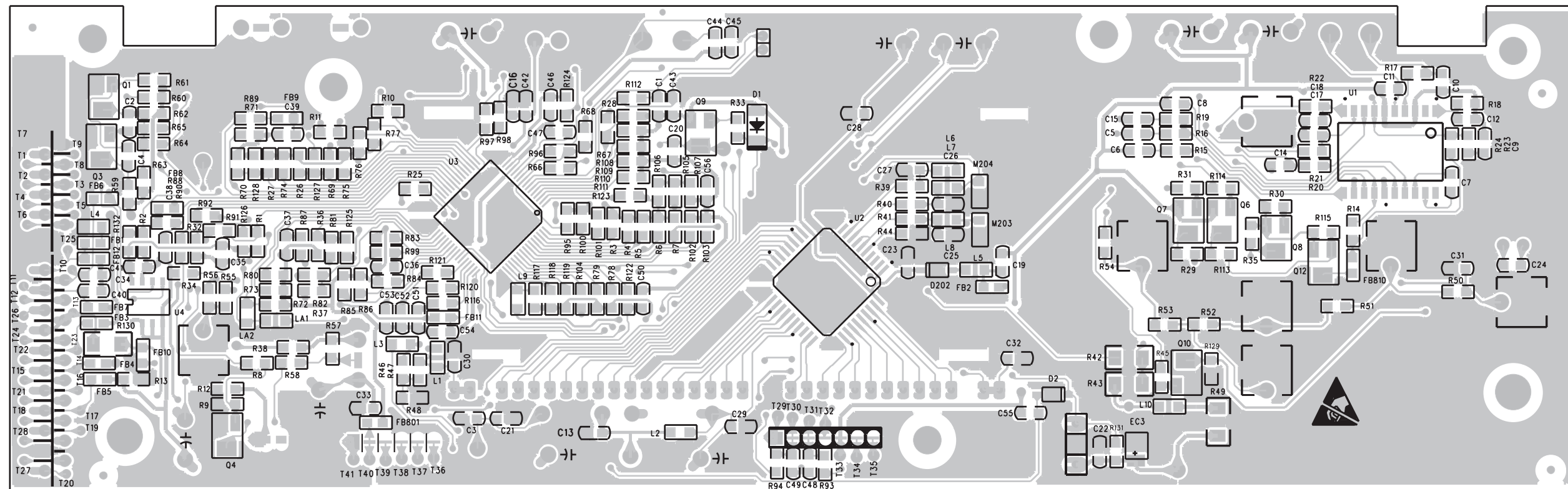
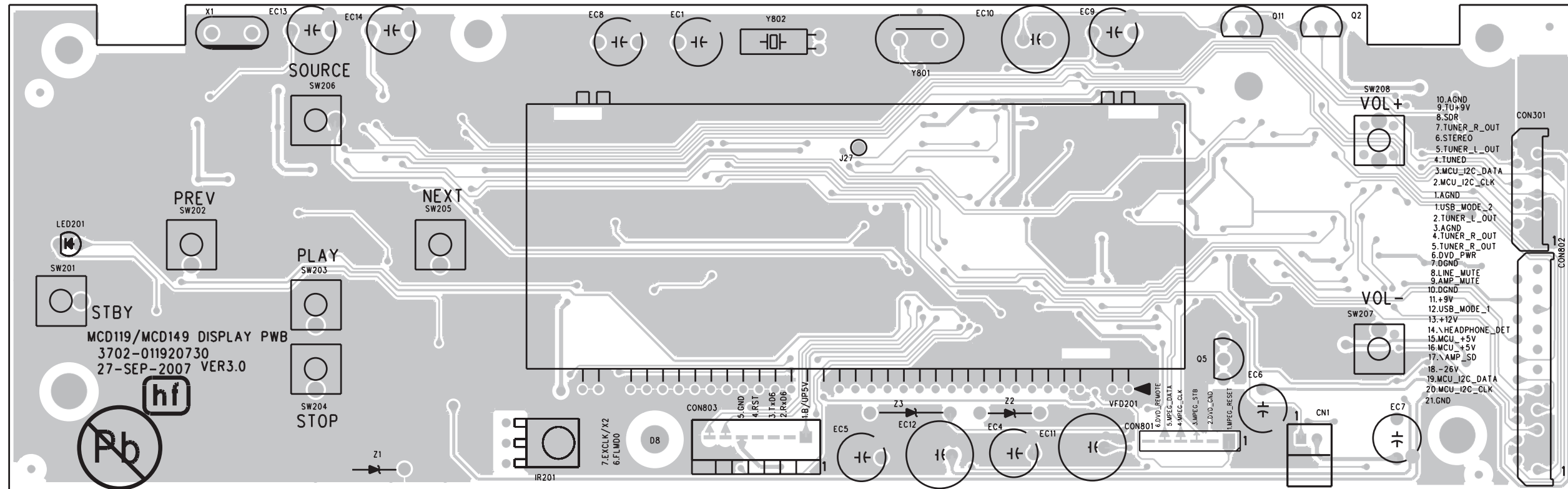
G. Remove USB Jack board



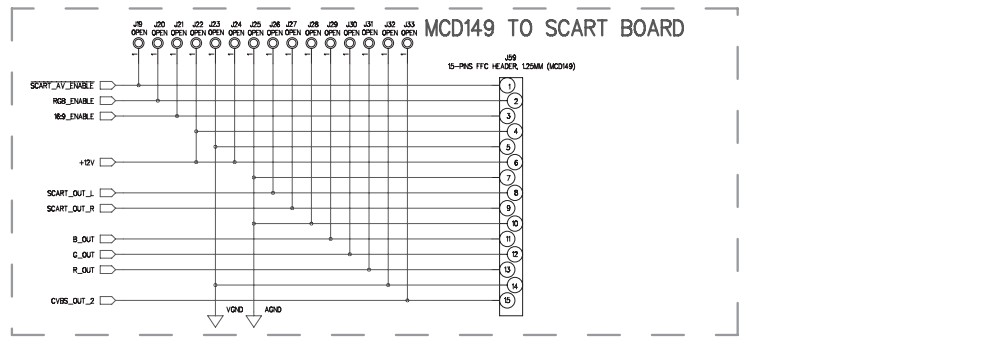
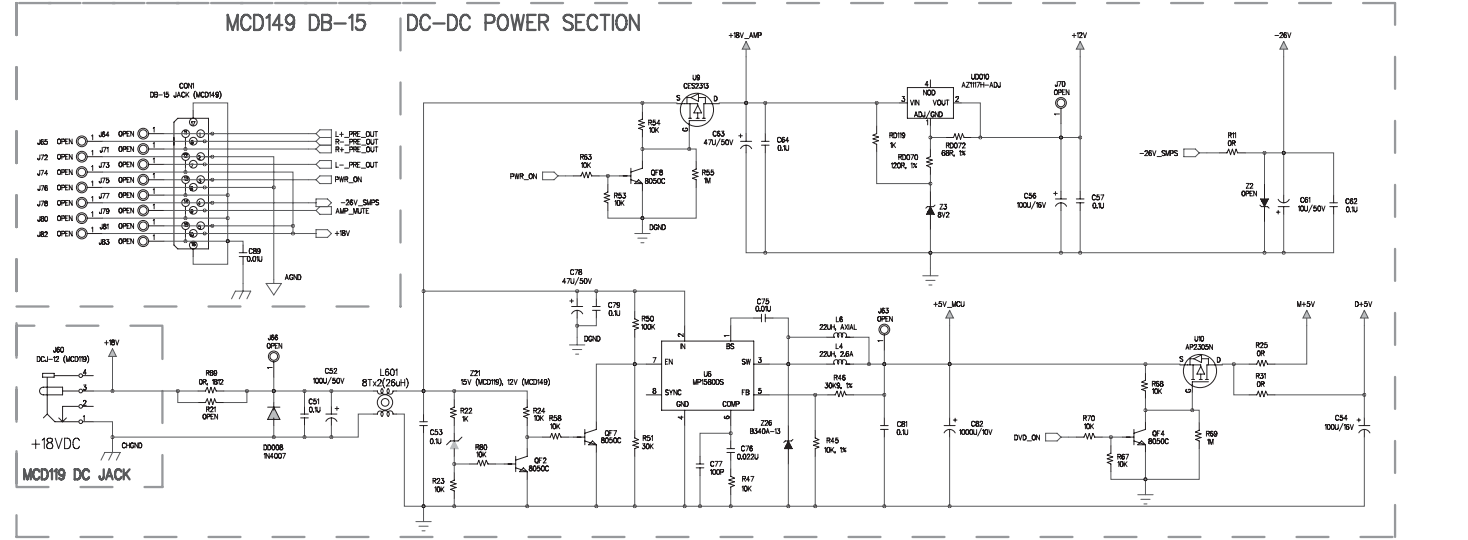
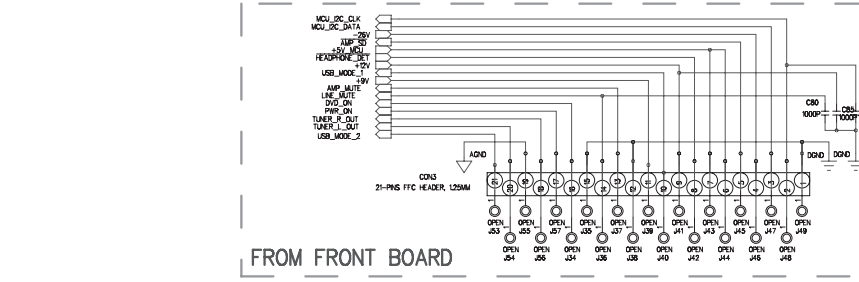
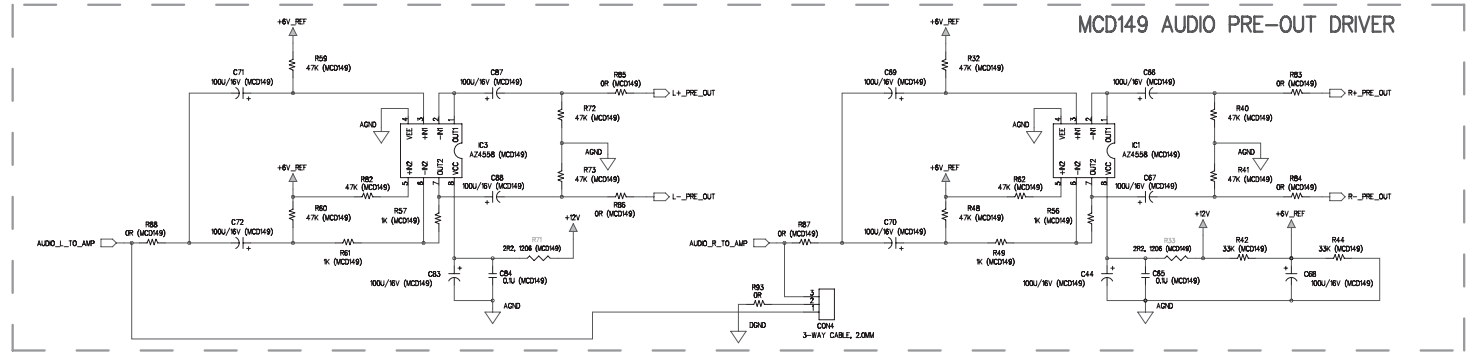
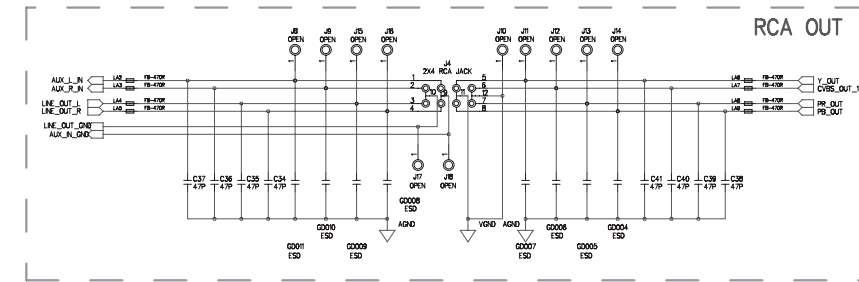
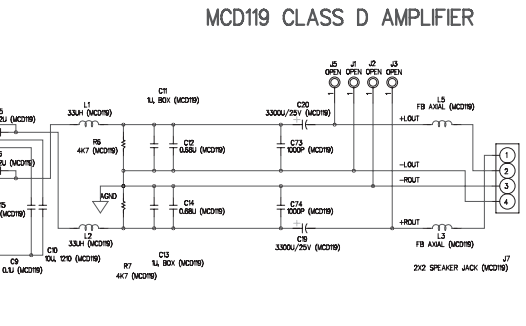
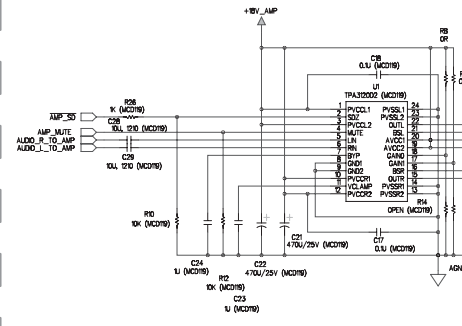
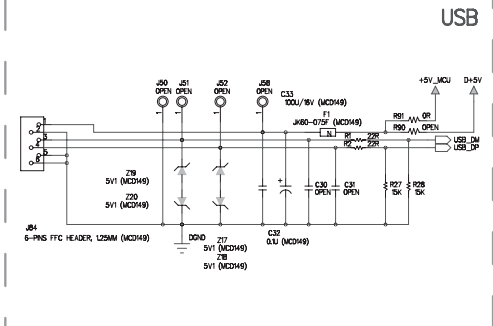
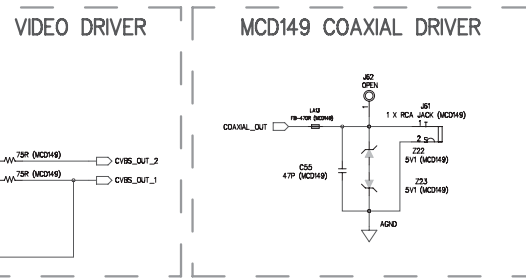
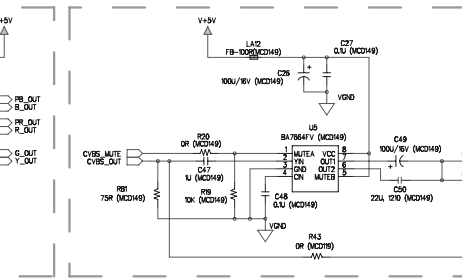
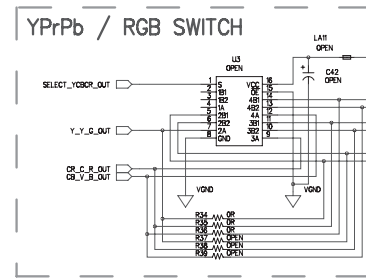
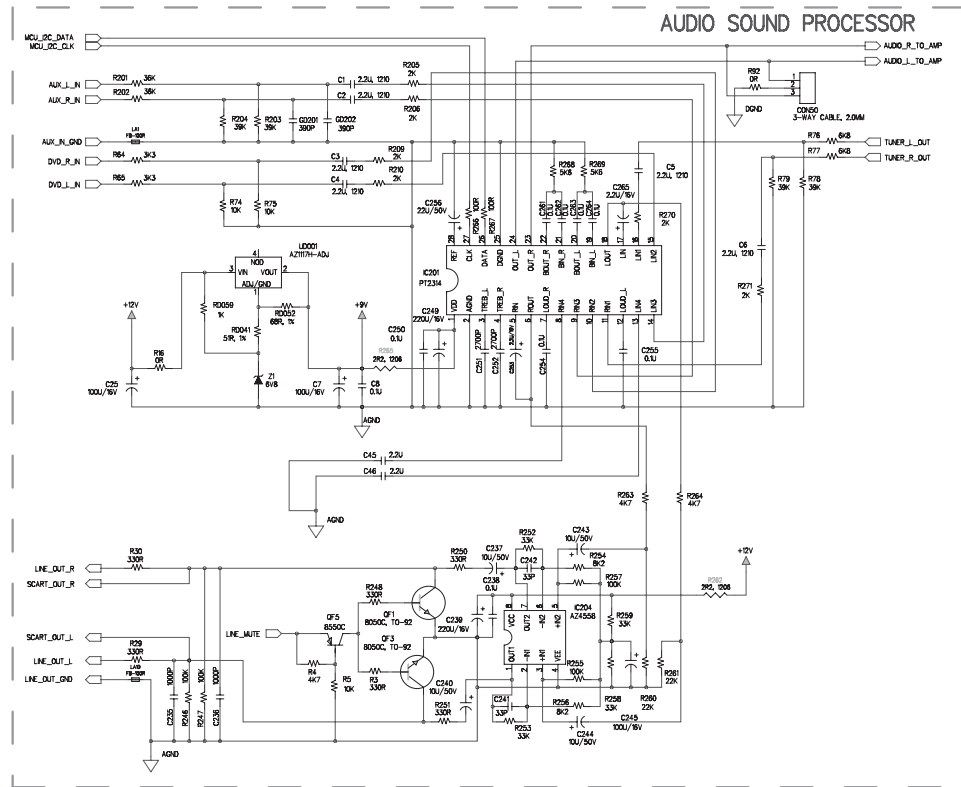
WIRING DIAGRAM



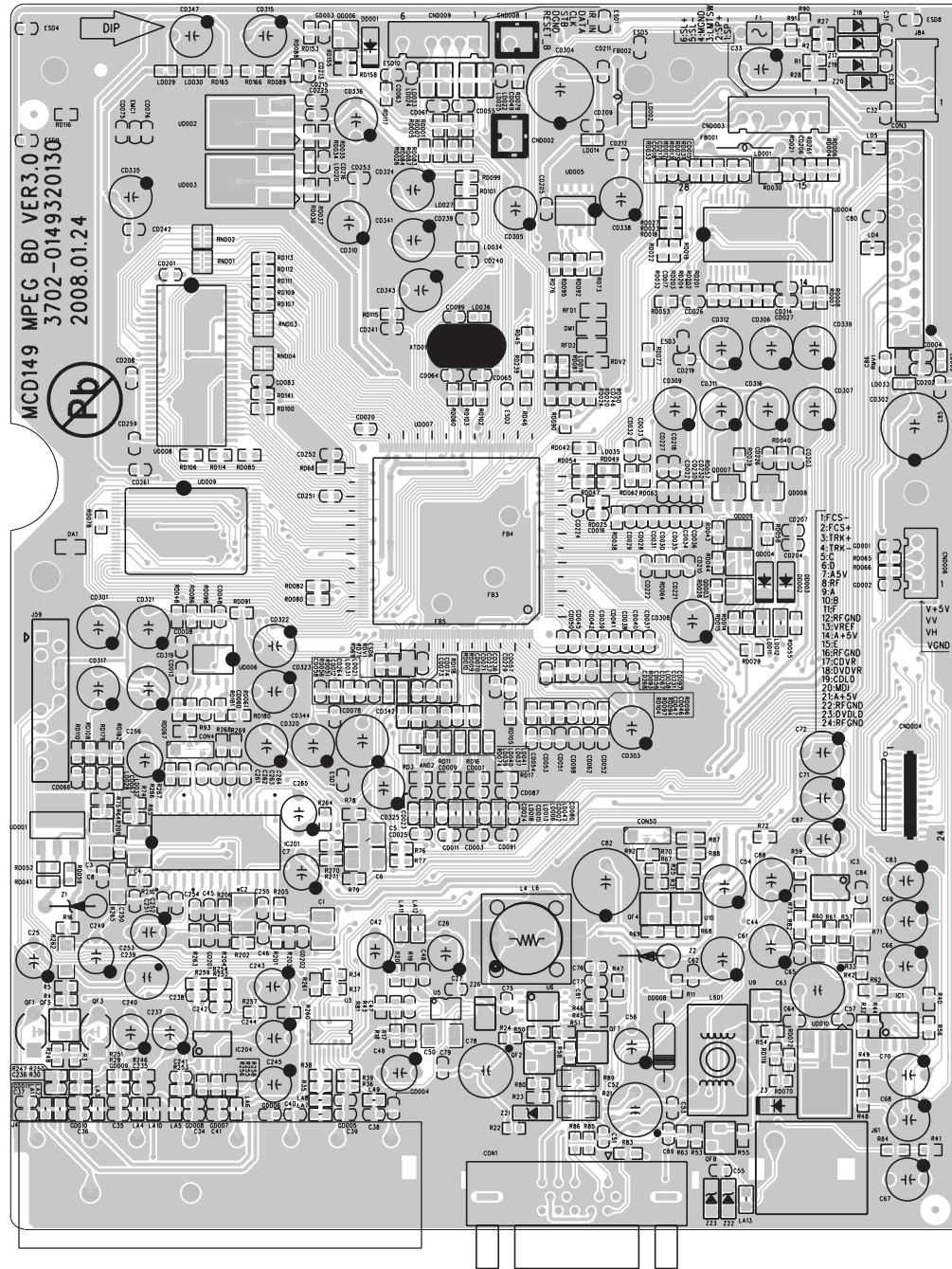
LAYOUT DIAGRAM - DISPLAY BOARD



CIRCUIT DIAGRAM - MPEG BOARD - Sheet1

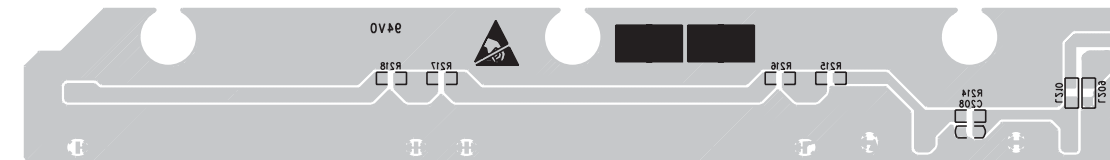
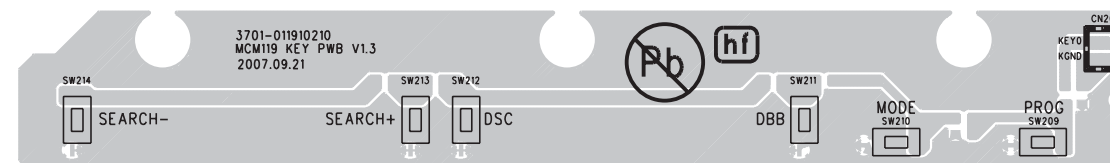
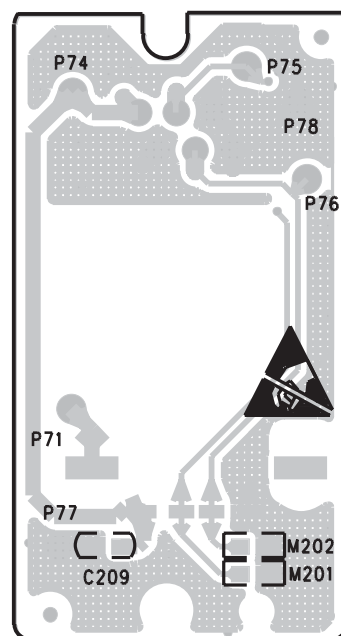
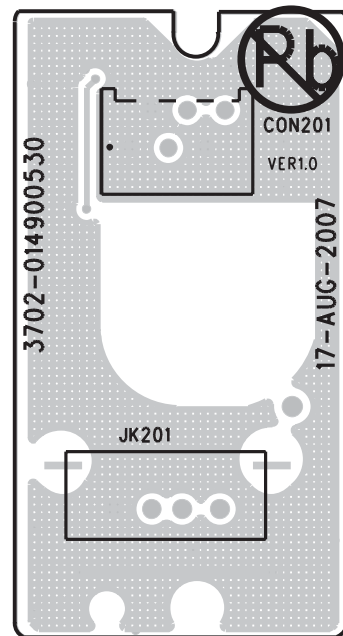
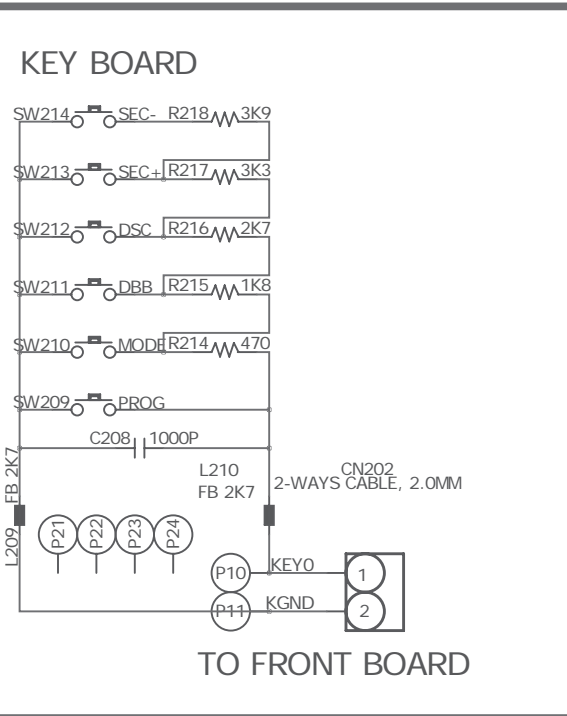
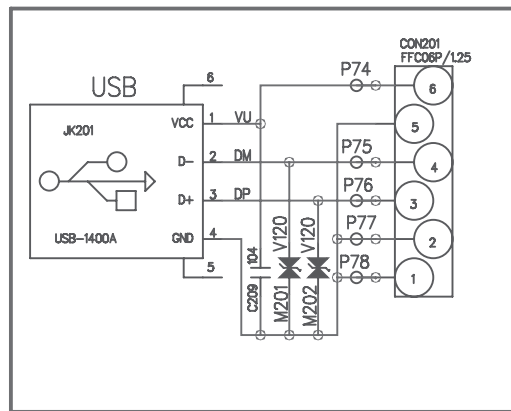


LAYOUT DIAGRAM - MPEG BOARD



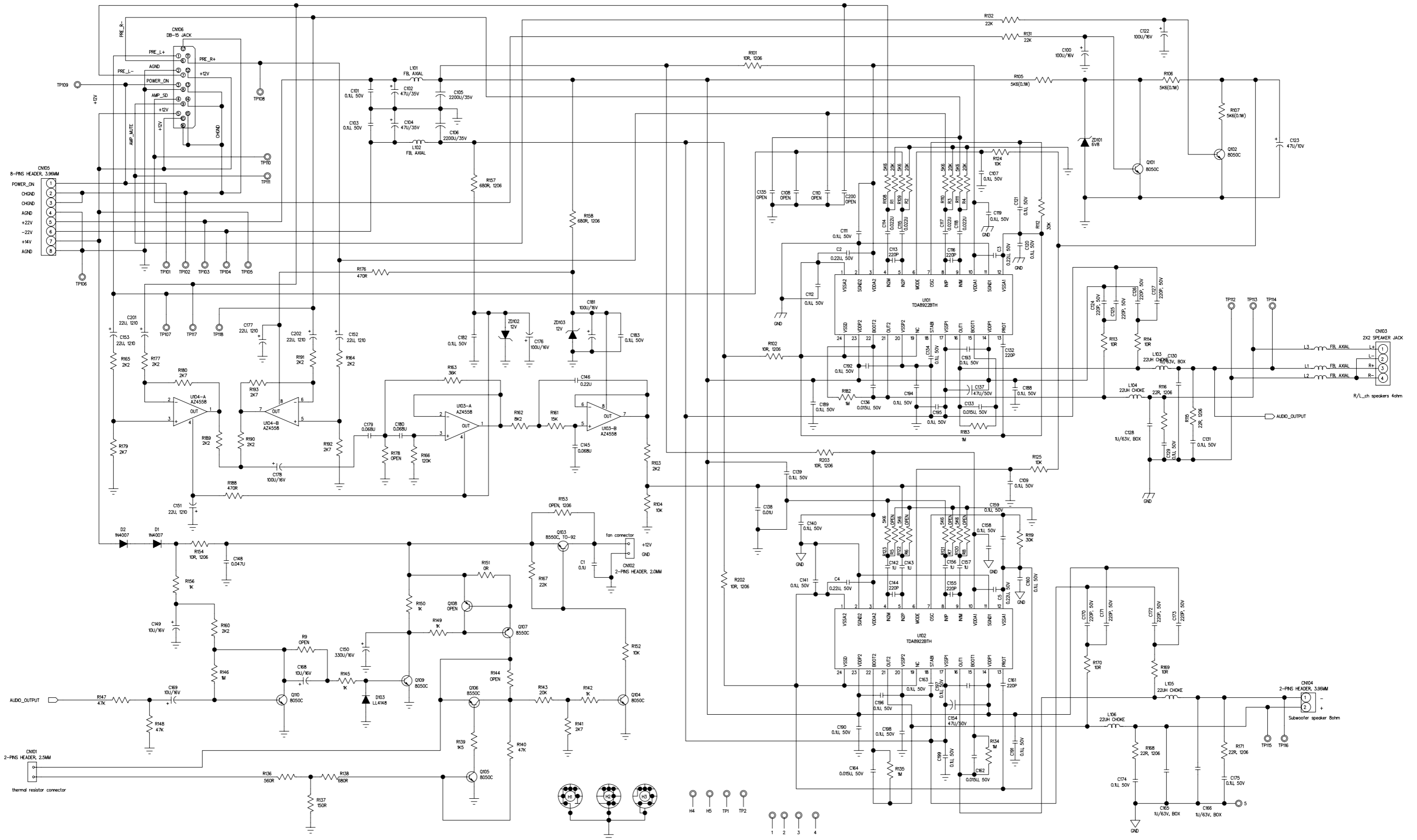
USB & KEY BOARD

USB BOARD

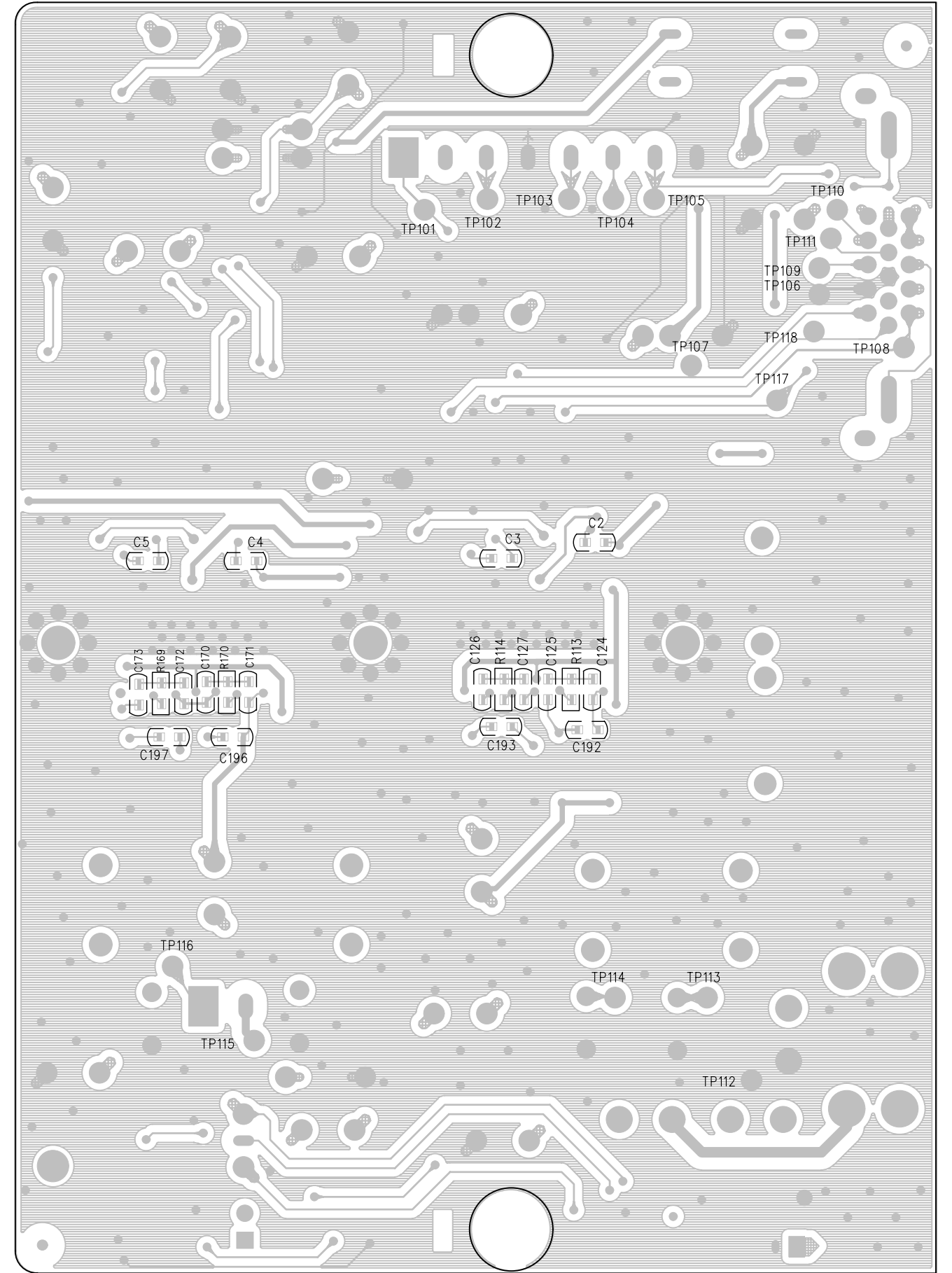
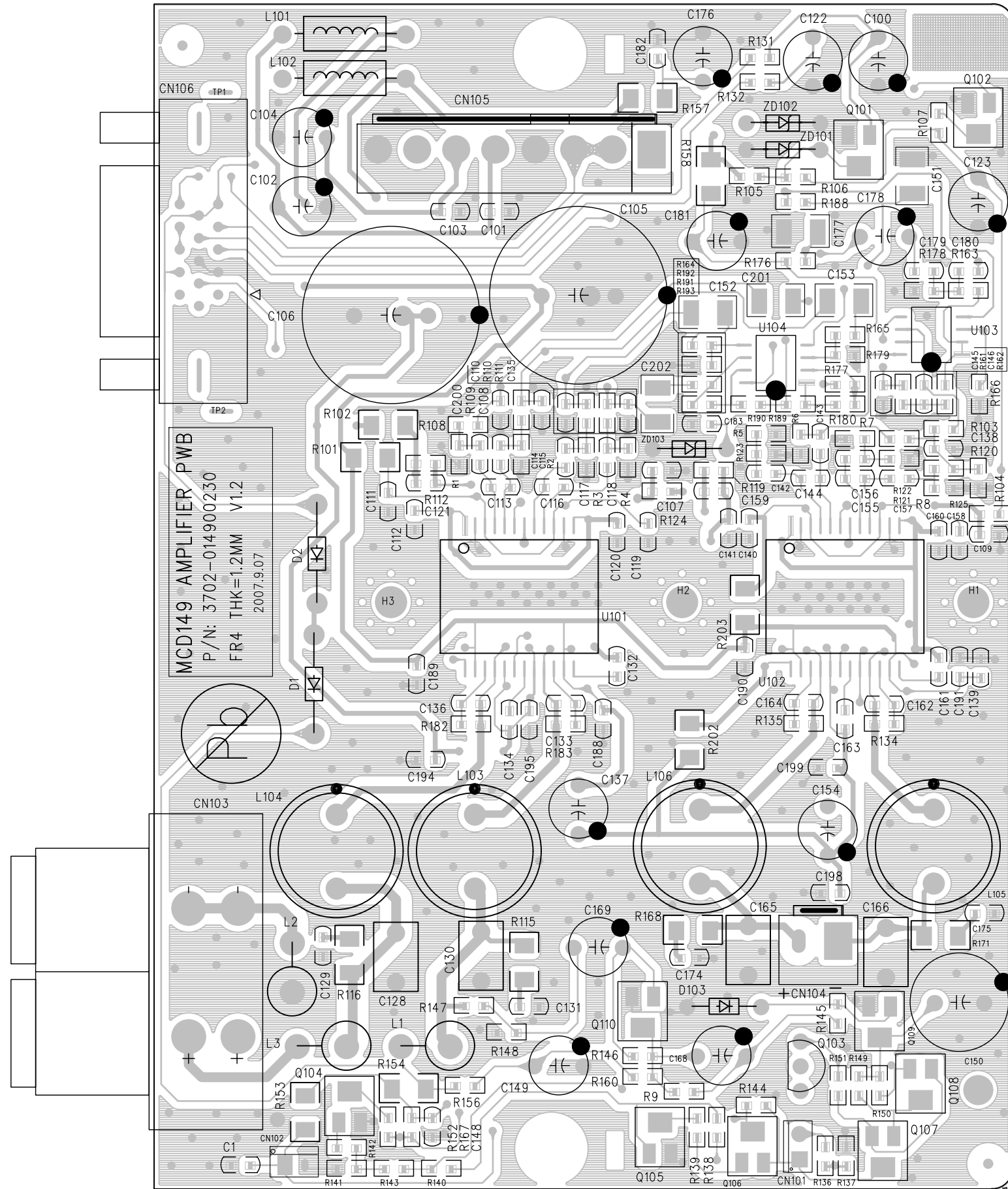


CIRCUIT DIAGRAM - AMPLIFIER BOARD

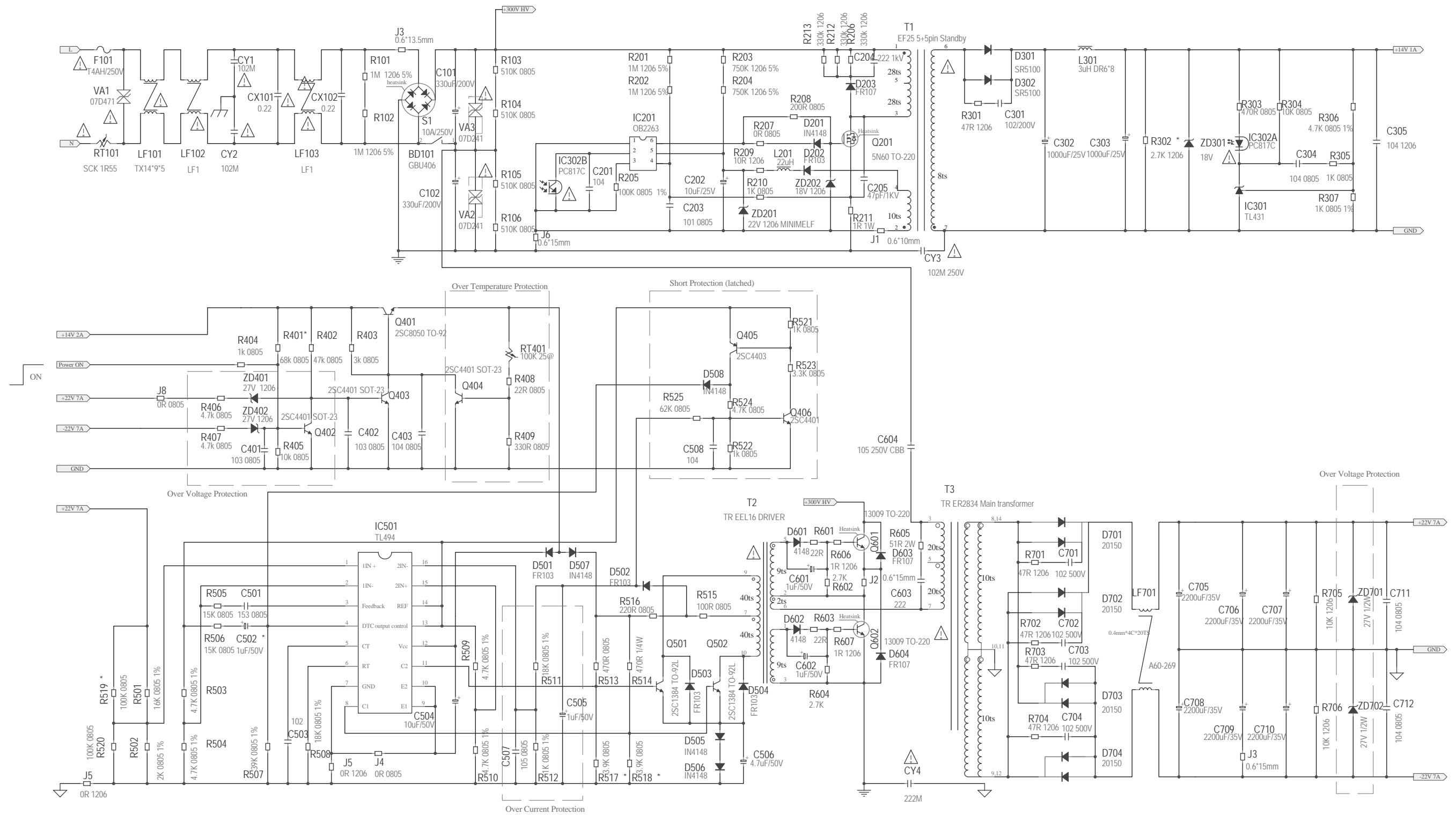
REVISION RECORD			
LTR	ECO NO:	APPROVED:	DATE:



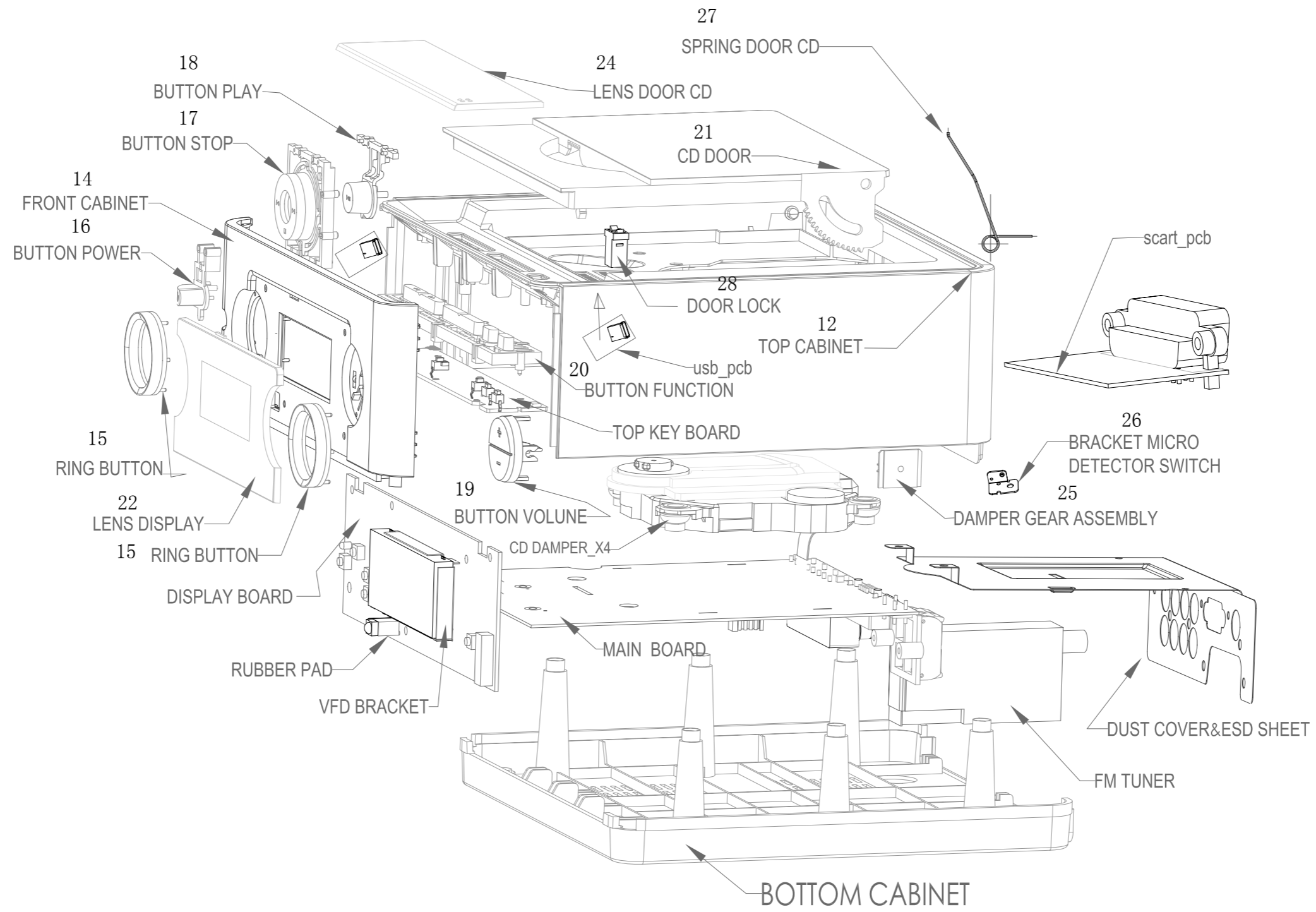
LAYOUT DIAGRAM - AMPLIFIER BOARD



CIRCUIT DIGRAM - SMPS BOARD



EXPLODE DIAGRAM



ACCESSORY PARTS

30	9965 100 11157	REMOTE CONTROL(MCD119)
31	9965 100 07102	AC POWER CORD BLACK L=1500MM(for /05)
31	9940 000 02082	AC CORD VDE 2.5A 250V(for /12)
32	9965 100 08138	FM WIRE ANTENNA AWG#22
33	9940 000 02597	RCA CABLE VIDEO (YELLOW)
36	9965 000 41864	CABLE HDB 15P/M L1500MM
37	9965 000 41865	CABLE A/M TO A/F L250
38	9965 100 07103	SPEAKER BOX OF MCD149/12

MECHNICAL&MISCELLANEOUS PARTS

12	9965 100 07098	TOP CABINET
13	9965 100 07076	BOTTOM CABINET
14	9965 100 07077	FRONT CABINET(for /05)
14	9965 100 09070	FRONT CABINET(for /12)
15	9965 000 41871	RING BUTTON
16	9965 000 41875	BUTTON POWER
17	9965 000 41872	BUTTON STOP
18	9965 000 41870	BUTTON PLAY
19	9965 100 09071	BUTTON VOLUME V1
20	9965 000 41873	BUTTON FUNCTION
21	9965 000 41869	DOOR CD
22	9965 100 07099	LENS DISPLAY
23	9965 000 41878	LENS BUTTON POWER
24	9965 100 09072	LENS DOOR CD V1
27	9965 100 18256	SPRINGDOOR CD(DIA1.2mm SUS304)
28	9965 000 41882	DOOR LOCK
	9965 100 01397	DVD MECHANISM KHM-313AHC
DRSW	9965 100 07074	DETECTOR SWITCH DTS-10-70 1P1T
FAN	9965 100 07096	COOLINGFANDF125015SL50X50X15MM
FFC1	9965 100 08139	FFC CABLE 24PIN P=0.5MML=210MM
FFC2	9940 000 04281	FFC 21P P1.25MM L110MM C TYPE
FFC3	9965 100 07660	FFC CABLE 10P P=1.25MM L=400MM
FFC4	9965 100 07873	FFC CABLE 15PIN P=1.25MM 200MM
FFC5	9965 100 08763	FFC CABLE 6PIN P=1.25MM L=95MM
SMPS	9965 100 07095	SMPS MODULE, FOR MCD149
TUNER	9965 100 07071	TUNER MOD KST-MT004FS1-6 (EUR)
SW	9965 000 41895	SWITCH TACT

ELECTRICAL PARTS - MAIN BOARD

AND2	9965 100 07089	IC SN74AHC1G08DBVR
DD008	9965 100 07042	DIODE RECT 1N4007 1A/1000VDO41
F1	9965 100 07086	THERMISTOR PTC 0.33OHM 40A72V
IC201	9965 100 01347	IC ET2314 SOUND SO28
J4	9965 100 07062	RCA JACK 8PINS D=8.3MM90DEGREE
J61	9940 000 03314	JACK RCA 1P D8.4MM(ORANGE)
L4	9965 100 18259	INDUCTOR 22UH 40mOHM3.6A
QD003	9965 100 00099	MOSFET 2SK3018 UMT3
QD004	9965 100 00099	MOSFET 2SK3018 UMT3
QD006	9965 100 07050	CH-TRNPN3DA8050hFE=120-220SOT
QD007	9965 100 00285	TRANSISTOR 2SB1132R
QD008	9965 100 00285	TRANSISTOR 2SB1132R
QD009	9965 100 07050	CH-TRNPN3DA8050hFE=120-220SOT
QF1	9965 100 07047	TRANSISTOR, 3DA8050CS

ELECTRICAL PARTS - MAIN BOARD

QF2	9965 100 07050	CH-TRNPN3DA8050hFE=120-220SOT
QF3	9965 100 07047	TRANSISTOR, 3DA8050CS
QF4	9965 100 07050	CH-TRNPN3DA8050hFE=120-220SOT
QF5	9965 100 07048	CH-TR. PNP SS8550LT1 SOT-23
QF7	9965 100 07050	CH-TRNPN3DA8050hFE=120-220SOT
QF8	9965 100 07050	CH-TRNPN3DA8050hFE=120-220SOT
U10	9965 100 07051	CH-MOSFET, AP2305GN SOT-23
U5	9965 100 07090	IC, VIDEO AMPLIFIER, BA7664AFV
U6	9965 100 07058	IC,MP1580HS, 2A 380KHz
U9	9965 100 07052	CH-MOSFET, CES2313 SOT-23
UD001	9965 100 07057	IC AZ1117H-ADJTRE1REGULATORSOT
UD002	9965 000 41892	IC AZ1117H-3.3 REGULATOR
UD003	9965 100 07057	IC AZ1117H-ADJTRE1REGULATORSOT
UD004	9965 100 00290	IC AM5669M28-E1 MOTOR DRIVER
UD005	9940 000 05674	IC BR24L02F-WE2
UD006	9965 000 41702	IC, AZ4558 OPERATIONALL
UD007	9965 100 00103	IC MPEG DECODER SPHE8281D-U
UD008	9965 100 00102	IC W9864G6EH-6 TSOP54L SDRAM
UD008	9965 100 07055	IC K4S641632K-UC60 SDRAM64MBIT
UD009	9965 100 07056	IC 8M S29AL008D70TFI01FLASHSMD
XTD01	9965 100 00943	CRYSTAL27MHZ30PF+/-20PPM
Z1	9965 100 07043	ZENER DIODE MTZ6.8B 1/2W
Z17	9965 100 07087	CH-ZENERDIODE MM1Z5V1ST(4N)SOD
Z18	9965 100 07087	CH-ZENERDIODE MM1Z5V1ST(4N)SOD
Z19	9965 100 07087	CH-ZENERDIODE MM1Z5V1ST(4N)SOD
Z20	9965 100 07087	CH-ZENERDIODE MM1Z5V1ST(4N)SOD
Z21	9965 100 07088	CH-ZENER DIODE 12V ZMM12 LL-34
Z22	9965 100 07087	CH-ZENERDIODE MM1Z5V1ST(4N)SOD
Z23	9965 100 07087	CH-ZENERDIODE MM1Z5V1ST(4N)SOD
Z26	9965 100 07046	SCHOTTKY BARRIER REC DIODE
Z3	9965 100 18257	ZENER DIODE MM1Z8V2 SOD-123

ELECTRICAL PARTS - DISPLAY BOARD

D2	9965 100 07067	SCHOTTKYBARRIERDIODE SS0520SOD
D202	9965 100 07067	SCHOTTKYBARRIERDIODE SS0520SOD
IR201	9965 100 08916	IR RECEIVER IRM-3638TF4
LED201	9965 000 41894	LED 3MM SUPER BLUE
Q1	9965 100 07050	CH-TRNPN3DA8050hFE=120-220SOT
Q10	9965 100 07050	CH-TRNPN3DA8050hFE=120-220SOT
Q2	9965 100 07047	TRANSISTOR, 3DA8050CS
Q3	9965 100 07050	CH-TRNPN3DA8050hFE=120-220SOT
Q4	9965 100 07050	CH-TRNPN3DA8050hFE=120-220SOT
Q9	9965 100 07050	CH-TRNPN3DA8050hFE=120-220SOT
TACTSW	9965 100 07070	TACTSWITCHTSJ-065001-3006x6x5
U2	9965 100 00296	IC, VFD DRIVER PT6315 LQFP44
U3	9965 100 01365	IC,MCU UPD78F0535 NEC
U4	9940 000 05674	IC BR24L02F-WE2
VFD201	9965 100 07069	VFD VFD33-1106N (BOE).
Y801	9965 100 00295	XTAL 8.38MHZ +/-20PPM CAP=20PF
Y802	9940 000 05671	XTAL 32.768KHZ +/-20PPM 12PF
Z1	9965 100 07065	DIODEZENERBZX55-C3.3V1/2W+/-5%
Z3	9965 100 07066	DIODEZENERBZX55/C4V7 1/2W+/-5%

ELECTRICAL PARTS - USB BOARD

JK201	9940 000 04263	USB JACK USB-1400A 4P
M201	9940 000 04264	MULT. VAR. 10.6-15.4V
M202	9940 000 04264	MULT. VAR. 10.6-15.4V

ELECTRICAL PARTS - SCART BOARD

Q1	9965 100 07050	CH-TRNPN3DA8050hFE=120-220SOT
Q3	9965 100 07050	CH-TRNPN3DA8050hFE=120-220SOT
Q4	9965 100 07049	CH-TR. PNP 3CA8550M SOT-23
SC1	9940 000 03338	JACK SCART CS-109 /22
Z12	9965 100 07087	CH-ZENERDIODE MM1Z5V1ST(4N)SOD
Z13	9965 100 07087	CH-ZENERDIODE MM1Z5V1ST(4N)SOD
Z2	9965 100 07087	CH-ZENERDIODE MM1Z5V1ST(4N)SOD
Z3	9965 100 07087	CH-ZENERDIODE MM1Z5V1ST(4N)SOD
Z6	9965 100 07087	CH-ZENERDIODE MM1Z5V1ST(4N)SOD
Z7	9965 100 07087	CH-ZENERDIODE MM1Z5V1ST(4N)SOD

Note: Only these parts mentioned in the list are normal service parts.

FACTORY PARTLIST

Level	Item	Desc	Unit	Qty	Location	AppForm	ChangeNo	MatProInd
0	0010	PHILIPS MCD149//12	SET	1.000				
.1	0010	ELECTRICAL SECTION OF MCD149/12	SET	1.000				
.2	0010	MAIN PWB ASSEMBLY OF MCD149/12	SET	1.000				
...	0010	CRYSTAL 27MHz 20PPM 30PF HC-49/S	PC	1.000	XTD01	FAP070569 FAP070550		
...	0015	CAP ELECT, 1000UF10V+/-20%8X14 105DEGREE.	PC	1.000	C82		T0707042	
...	0020	CH-CAP, CER 10PF50V+/-5%0603	PC	4.000	CD002, CD010, CD024, CD080			
...	0030	CH-CAP, CER 30PF50V+/-10%0603	PC	1.000	CD029			
...	0040	CH-CAP, CER33PF50V+/-5%0603	PC	7.000	C241, C242, CD015, CD049, CD055, CD061, CD063			
...	0060	CH-CAP, CER47PF50V+/-5%0603	PC	11.000	C34, C35, C36, C37, C38, C39, C40, C41, C55, CD053, CD054			
...	0070	CH-CAP, CER 51PF 50V +/-5% 0603	PC	2.000	CD064, CD065			
...	0080	CH-CAP, CER100PF50V+/-5%0603	PC	10.000	C77, CD001, CD003, CD009, CD011, CD023, CD025, CD062, CD087, CD091			
...	0090	CH-CAP, CER150PF50V+/-5%0603	PC	2.000	CD008, CD013			
...	0100	CH-CAP, CER300PF50V+/-5%0603	PC	1.000	CD031			
...	0110	CH-CAP, CER390PF50V+/-10%0603	PC	2.000	GD201, GD202			
...	0120	CH-CAP, CER 680PF50V+/-5%0603	PC	6.000	C60, CD037, CD038, CD040, CD041, CD046		T0707019	
...	0130	CH-CAP, CER 820PF50V+/-10%0603	PC	1.000	CD028			
...	0140	CH-CAP, CER 1000PF50V+/-5%0603	PC	8.000	C235, C236, CD032, CD033, CD211, CD267, CD268, EMC1			
...	0150	CH-CAP, CER1200PF 50V+/-10% 0603	PC	2.000	CD048, CD060			
...	0160	CH-CAP, CER 2200PF50V+/-10%0603	PC	2.000	CD066, CD067			
...	0170	CH-CAP, CER 2700PF50V+/-10%0603	PC	2.000	C251, C252			
...	0180	CH-CAP, CER3300PF50V+/-10%0603	PC	2.000	CD012, CD058			
...	0190	CH-CAP, CER4700PF50V+/-10%0603	PC	2.000	CD016, CD018			
...	0200	CH-CAP, CER0.01UF50V+/-10%0603	PC	6.000	C75, CD034, CD035, CD052, CD057, CD213			
...	0210	CH-CAP, CER 0.022UF 50V +/-10% 0603	PC	2.000	C58, C76			
...	0220	CH-CAP, CER0.047UF50V+/-10%0603	PC	1.000	CD030			
...	0230	CH-CAP, 0.068UF50V+/-10%0603	PC	1.000	CD047			
...	0240	CH-CAP, CER0.1UF50V+/-10%0603	PC	85.000	C8, C27, C32, C43, C48, C51, C53, C57, C59, C62, C64, C65, C79, C81, C84, C238, C250, C254, C255, C261, C262, C263, C264, CD004, CD020, CD022, CD026, CD027, CD056, CD070, CD071, CD073, CD075, CD076, CD078, CD201, CD202, CD203, CD204, CD205, CD206, CD207, CD208, CD209, CD210, CD212, CD214, CD215, CD216, CD217, CD218, CD219, CD221, CD222, CD224, CD225, CD226, CD227, CD229, CD230, CD231, CD232, CD236, CD237, CD239, CD240, CD241, CD242, CD246, CD251, CD252, CD253, CD259, CD261, CD264, ESD1, ESD2, ESD3, ESD4, ESD5, ESD6, ESD7, ESD8, ESD9, GD003		T0707030	
...	0250	CH-CAP, CER0.22UF50V+/-10%0603	PC	1.000	CD036			
...	0270	CH-CAP, CER 1UF50V+/-10%0603	PC	5.000	C47, CD039, CD045, CD050, CD051			
...	0280	CH-CAP, CER2.2UF10V+80%-20%0603	PC	8.000	C1, C2, C3, C4, C5, C6, C45, C46			
...	0290	CH-CAP, CER 22UF 10V +80%-20% 1210 Y5V	PC	1.000	C50			
...	0300	CAP ELECT, 2.2UF 50V +/-20% 5X11 TAPING	PC	2.000	C253, C265			
...	0310	CAP ELECT, 10UF 16V +/-20% 5X11 TAPING	PC	6.000	CD317, CD319, CD322, CD323, CD336, CD344			
...	0320	CAP, ELECT 10UF 50V +/-20% 5X11 TAPING	PC	3.000	C61, C237, C240			
...	0325	CAP ELECT 10UF 50V +/-20% 5X8 85C TAPING	PC	2.000	C243, C244			
...	0330	CAP ELECT, 22UF 50V +/-20% 5X11 TAPING	PC	1.000	C256			
...	0340	CAP ELECT, 47UF 16V +/-20% 5X11 TAPING	PC	4.000	CD308, CD309, CD311, CD312			
...	0350	CAP ELECT 47UF 50V +/-20% 6.3X8 85C TAPING	PC	2.000	C63, C78			
...	0360	CAP ELECT, 100UF 16V +/-20% 5X11 TAPING	PC	35.000	C7, C25, C33, C44, C54, C66, C67, C68, C69, C70, C71, C72, C83, C87, C88, CD301, CD302, CD303, CD304, CD305, CD306, CD307, CD310, CD315, CD316, CD320, CD321, CD324, CD335, CD338, CD339, CD341, CD342, CD343, CD347			
...	0365	CAP ELECT 100UF 16V +/-20% 85C 5X8 TAPING	PC	4.000	C26, C49, C56, C245		T0707042	
...	0370	CAP ELECT, 100UF 50V +/-20% 8x12 TAPING	PC	1.000	C52			
...	0380	CAP ELECT, 220UF 16V +/-20% 5X11 TAPING	PC	3.000	C239, C249, CD325			
...	0400	THERMISTOR PTC 0.330HM 40A 72V JK60-075F	PC	1.000	F1	FAP070603		
...	0405	CH-RES, OR 1/8W +/-5% 1206	PC	1.000	R62		T0707019	
...	0410	CH-RES, 0 OHM1/16W+/-5%0603	PC	36.000	DA1, DM1, R16, R20, R25, R31, R34, R35, R36, RD010, RD012, RD014, RD015, RD019, RD021, RD035, RD055, RD069, RD077, RD088, RD090, RD116, RD165, RD166, RD203, RD239, RD261, RDV1, RDV2, RFD1, LD028, LD032, LD037, LD039, LD040, LD041		T0707042	

FACTORY PARTLIST

Level	Item	Desc	Unit	Qty	Location	AppForm	ChangeNo	MatProInd
...	0420	CH-RES, 0 OHM1/16W+/-5%0805	PC	2.000	LD001, LD002			
...	0430	CH-RES, 1R1/16W+/-5%0603	PC	5.000	RD004, RD006, RD007, RD008, RD023			
...	0440	CH-RES, 2. 2R1/4W+/-5%1206	PC	4.000	R33, R71, R262, R265			
...	0450	CH-RES, 5. 1R1/16W+/-5%0603	PC	2.000	RD039, RD040		T0707019	
...	0460	CH-RES, 10R1/16W+/-5%0603	PC	1.000	RD115			
...	0470	CH-RES, 22R1/16W+/-5%0603	PC	2.000	R1, R2		T0707042	
...	0480	CH-RES, 33R1/16W+/-5%0603	PC	12.000	RD078, RD080, RD082, RD085, RD100, RD106, R107, RD109, RD111, RD112, RD113, RD114			
...	0490	CH-RES, 51R1/10W+/-1%0603	PC	2.000	RD037, RD041			
...	0495	CH-RES, 68R1/10W+/-1%0603	PC	1.000	RD052			
...	0500	CH-RES, 75R1/16W+/-1%0603	PC	5.000	R17, R18, RD3, RD11, RD16			
...	0510	CH-RES, 82R1/16W+/-1%0603	PC	1.000	RD17			
...	0520	CH-RES, 100R1/16W+/-5%0603	PC	9.000	R266, R267, RD73, RD76, RD079, RD083, RD084, RD087, RD155			
...	0530	CH-RES, 120R1/16W+/-1%0603	PC	1.000	RD036			
...	0540	CH-RES, 330R1/16W+/-5%0603	PC	9.000	R3, R4, R29, R30, R248, R250, R251, RD065, RD066		T0707042	
...	0550	CH-RES, 360R1/16W+/-1%0603	PC	1.000	RD118			
...	0560	CH-RES, 470R1/16W+/-5%0603	PC	2.000	RD029, RD043			
...	0565	CH-RES, 1K 1/16W +/-1% 0603	PC	4.000	R49, R56, R57, R61			
...	0570	CH-RES, 1K1/16W+/-5%0603	PC	13.000	R22, R76, R77, RD051, RD056, RD057, RD058, RD059, RD060, RD092, RD095, RD108, RD182		T0707042	
...	0580	CH-RES, 1. 2K 1/16W +/-1% 0603	PC	1.000	RD093			
...	0590	CH-RES, 1. 5K1/16W+/-5%0603	PC	1.000	RD094			
...	0600	CH-RES, 2K1/16W+/-5%0603	PC	6.000	R205, R206, R209, R210, R270, R271			
...	0610	CH-RES, 2. 2K1/16W+/-5%0603	PC	1.000	RD054			
...	0620	CH-RES, 2. 7K1/16W+/-5%0603	PC	1.000	R13		T0707042	
...	0630	CH-RES, 3. 3K1/16W+/-5%0603	PC	2.000	R64, R65		T0707042	L
...	0640	CH-RES, 3. 6K1/16W+/-1%0603	PC	1.000	R66			
...	0650	CH-RES, 4. 7K1/16W+/-5%0603	PC	10.000	R263, R264, RD001, RD002, RD005, RD042, RD047, RD049, RD081, RD103		T0707042	
...	0660	CH-RES, 5. 1K 1/16W+/-5%0603	PC	2.000	RD097, RD104		T0707042	
...	0670	CH-RES, 5. 6K1/16W+/-5%0603	PC	5.000	R268, R269, RD099, RD101, RD102			
...	0680	CH-RES, 8. 2K1/16W+/-5%0603	PC	2.000	R254, R256			
...	0690	CH-RES, 10K1/16W+/-1%0603	PC	1.000	R45			
...	0700	CH-RES, 10K1/16W+/-5%0603	PC	30.000	R5, R11, R19, R23, R24, R47, R53, R54, R58, R63, R67, R68, R70, R74, R75, R78, R79, R80, RD71, RD024, RD026, RD45, RD46, RD048, RD50, RD061, RD110, RD153, RD158, RD179		T0707042	
...	0710	CH-RES, 15K1/16W+/-5%0603	PC	6.000	R27, R28, RD091, RD098, RD180, RD181			
...	0720	CH-RES, 20K1/16W+/-5%0603	PC	1.000	RD096		T0707019	
...	0730	CH-RES, 22K1/16W+/-5%0603	PC	3.000	R260, R261, RD031			
...	0740	CH-RES, 30. 9K1/16W+/-1%0603	PC	1.000	R46			
...	0745	CH-RES, 30K1/16W+/-5%0603	PC	1.000	R51		T0707042	
...	0750	CH-RES, 33K1/16W+/-1%0603	PC	1.000	RD064			
...	0760	CH-RES, 33K1/16W+/-5%0603	PC	6.000	R42, R44, R252, R253, R258, R259			
...	0765	CH-RES, 36K1/16W+/-5% 0603	PC	2.000	R201, R202		T0707042	
...	0770	CH-RES, 39K1/16W+/-5%0603	PC	3.000	R203, R204, RD053		T0707019	
...	0780	CH-RES, 47K1/16W+/-5%0603	PC	10.000	R32, R40, R41, R48, R59, R60, R72, R73, RD009, RD074			
...	0790	CH-RES, 51K1/10W+/-1%0603	PC	1.000	R52			
...	0800	CH-RES, 56K1/16W+/-5%0603	PC	1.000	RD062		T0707019	
...	0810	CH-RES, 100K1/16W+/-5%0603	PC	9.000	R50, R246, R247, R255, R257, RD028, RD044, RD067, RD086		T0707042	
...	0820	CH-RES, 120K1/16W+/-5%0603	PC	1.000	RD063		T0707019	
...	0830	CH-RES, 150K1/16W+/-5%0603	PC	3.000	RD022, RD027, RD105			
...	0835	CH-RES, 470K1/16W+/-5%0603	PC	2.000	RD025, RD033			
...	0840	CH-RES, 1M1/16W+/-5%0603	PC	2.000	R55, R69			
...	0850	CH-RES OR 1/2W +/-5% 1812	PC	2.000	R21, R89			
...	0860	CH-ARRAY-RES 33 OHMx4 1/16W +/-5% 0603	PC	4.000	RND01, RND02, RND03, RND04			
...	0870	DIODE RECT IN4007 1A/1000V D041.	PC	1.000	DD008	FAP070564		
...	0875	ZENER DIODE MTZ6. 8B 1/2W	PC	1.000	Z1			
...	0880	CH-SW DIODE, BAV99 SOT23	PC	2.000	D1, D5	FA051735		
...	0890	CH-DIODE RLS4148 LL-34	PC	3.000	DD001, DD002, DD003	FA060300, FAP060547		
...	0900	SCHOTTKY BARRIER RECTIFIER, DIODE SX14, DO-214AC	PC	1.000	Z24			
...	0910	SCHOTTKY BARRIER RECTIFIER, DIODE SX34, DO-214AC	PC	1.000	Z26	CAP070152		
...	0915	CH-ZENER DIODE MM1Z5V1ST(4N) SOD-123	PC	6.000	Z17, Z18, Z19, Z20, Z22, Z23	FAP061252		
...	0920	CH-ZENER DIODE 12V ZMM12 LL-34.	PC	1.000	Z21		T0707042	

FACTORY PARTLIST

Level	Item	Desc	Unit	Qty	Location	AppForm	ChangeNo	MatProInd
...	0930	TRANSISTOR, 3DA8050CS HFE=120-180 NPN TO-92	PC	2.000	QF1, QF3		T0707019	
...	0940	CH-TRANSISTOR PNP SS8550LT1 SOT-23	PC	1.000	QF5	FAR070606		
...	0941	CH-TRANSISTOR PNP 3CA8550M SOT-23	PC	1.000	QF5	FAP070302		
...	0950	CH-TRANSISTOR, 2SB1132RSOT-89	PC	2.000	QD007, QD008	FA030227, FAR070605		
...	0970	CH-TR. NPN 3DA8050 hFE=120-220 SOT-23	PC	6.000	QF2, QF4, QF7, QF8, QD006, QD009	FAP060921		
...	0980	CH-MOSFET, AP2305GN SOT-23	PC	1.000	U10	FAR070754		
...	0990	CH-MOSFET, CES2313 SOT-23	PC	1.000	U9			
...	1000	MOSFET2SK3018SMD UMT3	PC	2.000	QD003, QD004	FAR060529 FAP070552		
...	1010	IC ET2314 SOUND SO28	PC	1.000	IC201	FAP070031		
...	1020	IC, AZ4558 OPERATIONALL AMP. CD	PC	4.000	IC1, IC3, IC204, UD006	FAP060499		
...	1030	IC, SUNPLUS MPEG DECODER SPHE8281D-U 216PIN LQFP	PC	1.000	UD007	FAP061102		
...	1040	IC SN74AHC1G08DBVR LOGIC SINGLE 2-INPUT POSITIVE-AND GATE, SOT23	PC	1.000	AND2			
...	1050	IC, BR24L02F-WE2	PC	1.000	UD005	FA050809		
...	1060	IC K4S641632K-UC75 TSOP54L SDRAM	PC	1.000	UD008	FAP070521		
...	1061	IC K4S641632K-UC60 SDRAM 64MBIT 60ns SMD TSOP54(II)	PC	1.000	UD008	FAP070401		
...	1062	IC, W9864G6EH-6 TSOP54L SDRAM	PC	1.000	UD008			
...	1063	IC, W9864G6EH-7 TSOP54L SDRAM	PC	1.000	UD008	FAP060416		
...	1070	IC 8M S29AL008D70TFI01 FLASH SMD TSOP	PC	1.000	UD009	FAP070300		
...	1080	IC AZ1117H-ADJ TRE1 REGULATOR SOT-223	PC	2.000	UD001, UD003	FA060250		
...	1090	IC, AZ1117H-3.3TRE1 REGULATOR SOT-223	PC	1.000	UD002	FAP061574		
...	1100	IC, MP1580HS, 2A 380KHz STEP DOWN CONVERTTER SO1CS	PC	1.000	U6			
...	1110	IC, MP2357DJ, 0.5A 1.4MHz STEP DOWN CONVERTER TSOT-23-6	PC	1.000	U8			
...	1130	IC, AM5669M28-E1 MOTOR DRIVER HSOP28	PC	1.000	UD004	FAP061675		
...	1140	IC, VIDEO AMPLIFIER, BA7664AFV, 8PIN-SSOP-B	PC	1.000	U5			
...	1150	CH-INDUCTOR, 1UH 0805 DCR:0.4R	PC	8.000	LD006, LD013, LD018, LD022, LD023, LD024, LD025, LD042	FAP070383 FAR070600		
...	1160	CH-INDUCTOR 4.7uH +/-20% DCR:0.16R.	PC	1.000	L9			
...	1170	CHOCK COIL 10UH Q=50 DCR=1.150HM 0805	PC	2.000	LD011, LD012	FA040353F AR070599		
...	1180	CH-INDUCTOR 22UH 1KHz +/-20% DCR:40mOHM3.6A	PC	1.000	L4			
...	1190	TORODIDAL COIL 30uH +/-30% DCR:0.025R.	PC	1.000	L601			
...	1210	FERRITE BEAD SMD 1000HM +/-25%/100MHZ 0603 GZ1608D101	PC	3.000	LA1, LA10, LA12	FAP060498		
...	1220	FERRITE BEAD SMD 300HM +/-25%/100MHZ 0603 GZ1608U300T	PC	12.000	RD141, LD003, LD019, LD020, LD021, LD027, LD029, LD030, LD031, LD033, LD034, LD038	FA040337		
...	1230	CH-FERRITE BEAD 470 OHM +/-25% 100MHZ 0603	PC	9.000	LA2, LA3, LA4, LA5, LA6, LA7, LA8, LA9, LA13	CAP060307 FAP070118		
...	1240	HEADER 2PIN 2.0MM STRAIGHT	PC	1.000	CND008	FA030083, FAP061602		
...	1250	HEADER 6PIN 2.0MM STRAIGHT	PC	2.000	CND003, CND009	FA030081, FAP070201		
...	1260	FFC CONNECTOR 24P PH=0.5MM FC201-24 (UPPER CONTACT TYPE)	PC	1.000	CND004			
...	1261	FFC CONNECTOR 24PIN PH=0.5MM FLAT	PC	1.000	CND004	FA051135, FAP060406		
...	1270	FFC CONNECTOR 6P PH=1.25MM 90 DEGREE	PC	1.000	J84	FAP061413		
...	1275	FFC CONNECTOR 21PIN P=1.25MM 90DEGREE	PC	1.000	CON3	FA040322		
...	1280	CONNECTOR, FFC P=15PIN P=1.25MM STRAIGHT	PC	1.000	J59	CA040598, FA050857		
...	1290	D-SUB CONNECTOR 15PIN HF-051188-001-000 P=2.29MM 90DEGREE	PC	1.000	CON1	FAP061594		
...	1295	JACK RCA-108/OG 1PORT D=8.4MM (ORANGE)	PC	1.000	J61	FA051230		
...	1300	RCA JACK 8PINS D=8.3MM 90DEGREE RCA-813P-07	PC	1.000	J4			
...	1310	DVD MPEG PWB D.S. FR4 264X195X1.2MM/2 MCD149-01 V1.0	PC	1.000				
...	1320	PULSE GUARD 0603ESDA-TR1	PC	10.000	GD001, GD002, GD004, GD005, GD006, GD007, GD008, GD009, GD010, GD011	FAP061453		
...	1330	BRACKET MAIN BOARD (SPT T=0.5MM)	PC	1.000		FAP061487		
..2	0020	DISPLAY PWB ASSEMBLY OF MCD119/12	SET	1.000				
...	0010	CRYSTAL, 32.768KHZ +/-20PPM 12PF	PC	1.000	Y802	FA050728		
...	0020	CRYSTAL 8.38MHZ +/-20PPM LOADER CAP=20PF	PC	1.000	Y801	FA051212		
...	0030	CH-CAP, CER18PF50V+/-5%0603 NPO	PC	2.000	C1, C43			
...	0040	CH-CAP, CER20PF50V+/-5%0603	PC	2.000	C44, C45			
...	0050	CH-CAP, CER33PF50V+/-5%0603	PC	2.000	C40, C41			
...	0060	CH-CAP, CER100PF50V+/-5%0603	PC	9.000	C36, C39, C48, C49, C50, C51, C52, C53, C55			
...	0070	CH-CAP, CER220PF50V+/-5%0603	PC	3.000	C25, C26, C27			
...	0080	CH-CAP, CER 1000PF50V+/-5%0603	PC	1.000	C31			

FACTORY PARTLIST

Level	Item	Desc	Unit	Qty	Location	AppForm	ChangeNo	MatProInd
...	0090	CH-CAP, CER 2200PF50V+/-10%0603	PC	2.000	C2, C4			
...	0100	CH-CAP CER 0.1UF50V+/-5%0603	PC	17.000	C3, C19, C20, C22, C23, C24, C28, C29, C33, C34, C35, C37, C38, C42, C46, C54, C56			
...	0110	CH-CAP, CER 1UF50V+/-10%0603	PC	1.000	C47			
...	0120	CAP ELECT 10UF 50V +/-20% 5X8 85C TAPING	PC	4.000	EC4, EC5, EC8, EC9		T0707012	
...	0140	TANT. CH-CAP 47uF 10V +/-20% 3528-B	PC	1.000	EC3	FA040624, FAP060924		
...	0150	CAP ELECT 47UF 50V +/-20% 6.3X8 85C TAPING	PC	3.000	EC10, EC11, EC12		T0707012	
...	0160	CAP ELECT 100UF 16V +/-20% 85C 5X8 TAPING	PC	3.000	EC2, EC6, EC7		T0707012	
...	0165	CH-RES, OR 1/8W +/-5% 1206	PC	1.000	R130		T0707042	
...	0170	CH-RES, 0 OHM1/16W+/-5%0603	PC	6.000	R12, R13, R35, R104, R105, R124			
...	0180	CH-RES, 2.2R1/16W+/-5%0603	PC	1.000	R38			
...	0190	CH-RES, 47R1/16W+/-5%0603	PC	3.000	R116, R120, R121			
...	0200	CH-RES, 100R1/4W+/-5%1206	PC	1.000	R49		T0706044	
...	0210	CH-RES, 100R1/16W+/-5%0603	PC	8.000	R33, R66, R67, R68, R87, R93, R94, R99			
...	0220	CH-RES, 220R1/16W+/-5%0603	PC	3.000	R39, R40, R41			
...	0230	CH-RES, 470R1/16W+/-5%0603	PC	11.000	R46, R47, R50, R81, R82, R88, R89, R90, R91, R92, R122		T0707042	
...	0235	CH-RES, 680R1/4W+/-5%1206	PC	1.000	R43		T0707042	
...	0240	CH-RES, 1K1/16W+/-5%0603	PC	8.000	R45, R62, R63, R64, R97, R98, R127, R128		T0707042	
...	0250	CH-RES, 1.8K1/16W+/-5%0603	PC	1.000	R51			
...	0260	CH-RES, 2.2K1/16W+/-5%0603	PC	2.000	R58, R59			
...	0270	CH-RES, 2.7K1/16W+/-5%0603	PC	1.000	R52			
...	0280	CH-RES, 3.3K1/16W+/-5%0603	PC	1.000	R53			
...	0290	CH-RES, 3.9K1/16W+/-5%0603	PC	1.000	R54			
...	0300	CH-RES, 4.7K1/16W+/-5%0603	PC	6.000	R8, R9, R57, R117, R119			
...	0310	CH-RES, 7.5K1/16W+/-5%0603	PC	1.000	R55			
...	0320	CH-RES, 10K1/16W+/-5%0603	PC	43.000	R1, R2, R3, R4, R5, R6, R7, R25, R26, R27, R28, R32, R34, R37, R60, R71, R72, R73, R74, R75, R76, R77, R78, R79, R80, R65, R83, R84, R85, R86, R95, R100, R101, R102, R103, R106, R108, R109, R110, R111, R123, R125, RD61		T0707019	
...	0330	CH-RES, 12K1/16W+/-5%0603	PC	2.000	R48, R56			
...	0350	CH-RES, 100K1/16W+/-5%0603	PC	2.000	R44, R96			
...	0360	ZENER DIODE 2.4V 1/2W	PC	1.000	Z3			
...	0370	DIODE ZENER BZX55-C3.3V1/2W +/-5% D0-35.	PC	1.000	Z1	FAP070243		
...	0380	DIODE ZENER BZX55/C4V7 1/2W +/-5% D0-35.	PC	1.000	Z2	FAP070245		
...	0390	LED 3MM SUPER BLUE DIFFUSED 33B4SDA01.	PC	1.000	LED201	FAP061555		
...	0400	CH-DIODE RLS4148 LL-34	PC	1.000	D1	FA060300, FAP060547	T0707042	
...	0405	SCHOTTKY BARRIER DIODE, SS0520 SOD-123.	PC	2.000	D2, D202	FAR070766	T0707042	
...	0410	CH-ZENER DIODE D01-BZT52C2V4S-TR	PC	1.000	Z3			
...	0420	TRANSISTOR, PNP 3CA8550 hFE=120-220 T0-92	PC	2.000	Q5, Q11	FA050161	T0707042	
...	0430	CH-TR. NPN 3DA8050 hFE=120-220 SOT-23	PC	6.000	Q1, Q2, Q3, Q4, Q9, Q10	FAP060921	T0707042	
...	0440	IC, MCU UPD78F0535 NEC	PC	1.000	U3	FAP061829		
...	0450	IC, BR24L02F-WE2	PC	1.000	U4	FA050809		
...	0460	IC, VFD DRIVER PT6315 LQFP44	PC	1.000	U2	FA051648		
...	0470	IR RECEIVER BRM-4050-8-FB2.2	PC	1.000	IR201	FAP061109		
...	0480	VFD VFD33-1106N (BOE).	PC	1.000	VFD201	FAP070848		
...	0490	FERRITE BEAD SMD 100OHM +/-25%/100MHZ 0603 GZ1608D101	PC	9.000	FB2, FB3, FB4, FB6, FB7, FB8, FB9, FB10, FB11	FAP060498		
...	0500	CH-FERRITE BEAD, 2K70HM@100MHZ 0603	PC	10.000	L1, L2, L3, L4, L5, L6, L7, L8, L9, L10	FA040664		
...	0510	FERRITE BEAD SMD 300HM +/-25%/100MHZ 0603 GZ1608U300T	PC	4.000	FB1, FB5, FB12, FB801	FA040337		
...	0520	FERRITE BEAD 100MHz/600 OHM 0603.	PC	2.000	LA1, LA2	FAP060920, FAP070117		
...	0530	HEADER 2PIN 2.0MM 90 DEGREE WHITE	PC	1.000	CN1	FAP061500		
...	0540	HEADER 7PIN 2.0MM 90ANGLE	PC	1.000	CON803		T0707042	
...	0550	FFC CONNECTOR 10PIN P=1.25MM 90DEGREE WHITE	PC	1.000	CON301	CA050510F, AP071094		
...	0560	FFC CONNECTOR 21PIN P=1.25MM 90DEGREE	PC	1.000	CON802	FA040322		
...	0570	TACT SWITCH TSJ-065001-300 6x6x5MM 1P1T	PC	8.000	SW201, SW202, SW203, SW204, SW205, SW206, SW207, SW208	CAP060320		
...	0580	HOUSING 6PIN P=2.0MM AWG#30 L=180MM PLUG TO BOARD IN	PC	1.000	CON801	FAP070153		
...	0590	CH-MULT. VAR. EZJZ1V120KA 10.6-15.4V 0603	PC	2.000	M203, M204	FAP061433		
...	0600	DISPLAY PWB D.S. FR4 141x195x1.6MM/2 MCD119-07 V1.0	PC	1.000				
...	0610	BRADKET VFD(SPTE T=0.5MM)	PC	1.000	FORVFD	FAP061177		
...	0620	RUBBER PAD 6x8x8.4MM	PC	1.000	FORIR	FAP061536		

FACTORY PARTLIST

Level	Item	Desc	Unit	Qty	Location	AppForm	ChangeNo	MatProInd
.. 2	0030	KEY PWB ASSEMBLY OF MCM119/12	SET	1.000				
... 3	0010	CH-CAP, CER 1000PF50V+/-5%0603	PC	1.000	C208			
... 3	0020	CH-RES, 470R1/16W+/-5%0603	PC	1.000	R214			
... 3	0030	CH-RES, 1.8K1/16W+/-5%0603	PC	1.000	R215			
... 3	0040	CH-RES, 2.7K1/16W+/-5%0603	PC	1.000	R216			
... 3	0050	CH-RES, 3.3K1/16W+/-5%0603	PC	1.000	R217			
... 3	0060	CH-RES, 3.9K1/16W+/-5%0603	PC	1.000	R218			
... 3	0070	CH-FB, 2700OHM+/-25% 0805 SZ2012K272T(LF).	PC	2.000	L209, L210	FA040575		
... 3	0080	SWITCH TACT TS-03-BS-180G 5MM	PC	6.000	SW209, SW210, SW211, SW212, SW213, SW214	FA060326		
... 3	0090	HOUSING 2PIN P=2.0MM L=120MM AWG#30 UL1571 SINGLE PLUG (RED/BLACK)	PC	1.000	CN202	FAP061484	T0608084	
... 3	0095	HOUSING 2PIN P=2.0MM L=120MM AWG#30 UL1007 SINGLE PLUG (RED/BLACK)	PC	1.000	CN202		T0608084	
... 3	0100	PWB 141x161x1.6MM/5 94VO MCM119-02 (KEY).	PC	1.000		FAP061558		
.. 2	0040	USB PWB ASSEMBLY OF MCD149/EU	SET	1.000				
... 3	0010	CH-CAP, CER0.1UF50V+/-10%0603	PC	1.000	C209			
... 3	0020	FFC CONNECTOR 6P PH=1.25MM 90 DEGREE	PC	1.000	CON201	FAP061413		
... 3	0030	USB JACK USB-1400A 4P	PC	1.000	JK201	FA051716		
... 3	0040	CH-MULT. VAR. EZJZ1V120KA 10.6-15.4V 0603	PC	2.000	M201, M202	FAP061433		
... 3	0050	USB PWB D.S. FR4 195x110x1.2MM/20 MCD149-05 V1.0	PC	1.000				
.. 2	0050	AMPLIFIER PWB ASSEMBLY OF MCD149.	SET	1.000				
... 3	0010	CAP ELECT, 330UF50V+/-20%10x16	PC	1.000	C150			
... 3	0020	CH-CAP, CER 220PF50V+/-10%0603	PC	14.000	C113, C116, C124, C125, C126, C127, C132, C144, C155, C161, C170, C171, C172, C173			
... 3	0030	CH-CAP, CER560PF50V+/-5%0603	PC	4.000	C184, C185, C186, C187			
... 3	0040	CH-CAP, CER0.01UF50V+/-10%0603	PC	5.000	C108, C110, C135, C138, C200			
... 3	0050	CH-CAP, CER15NF50V+/-10%0603	PC	4.000	C133, C136, C162, C164			
... 3	0060	CH-CAP, CER0.033UF50V+/-10%0603	PC	4.000	C114, C115, C117, C118			
... 3	0070	CH-CAP, CER0.047UF50V+/-10%0603	PC	3.000	C145, C148, C180			
... 3	0080	CH-CAP, 0.068UF50V+/-10%0603	PC	1.000	C179			
... 3	0090	CH-CAP, CER0.1UF50V+/-10%0603	PC	35.000	C101, C103, C107, C109, C111, C112, C119, C120, C121, C129, C131, C134, C139, C140, C141, C158, C159, C160, C163, C174, C175, C182, C183, C188, C189, C190, C191, C192, C193, C194, C195, C196, C197, C198, C199			
... 3	0100	CH-CAP, CER0.33UF 16V+/-5%0603	PC	1.000	C146			
... 3	0110	CH-CAP, CER 1UF50V+/-10%0603	PC	4.000	C142, C143, C156, C157			
... 3	0120	CAP ELECT, 10UF 16V +/-20% 5X11 TAPING	PC	7.000	C149, C152, C153, C168, C169, C201, C202			
... 3	0130	CAP ELECT, 47UF 16V +/-20% 5X11 TAPING	PC	3.000	C123, C151, C177			
... 3	0140	CAP ELEC KM 47UF 35V +/-20% 105C RAD ST5 6x11MM EKMA76M1VD11TCSA TAPING	PC	2.000	C102, C104			
... 3	0150	CAP ELECT, 47UF 50V +/-20% 6.3X11 TAPING	PC	2.000	C137, C154			
... 3	0160	CAP ELECT, 100UF 16V +/-20% 5X11 TAPING	PC	5.000	C100, C122, C176, C178, C181			
... 3	0170	CAP, ELECT, 470UF 35V +/-20% 10X16mm 105DEGREE (SHORT LEGS)	PC	2.000	C105, C106			
... 3	0180	CAP METALLIZED POLYESTER FILM 1.0uF 63V +/-5% CL21X TAPING	PC	4.000	C128, C130, C165, C166	FAP070607	T0707042	
... 3	0190	RES, 4.7R1W+/-5%	PC	1.000	R201			
... 3	0200	THERMISTOR RES, NTC FH-CWF103H3950FA-165E 10K +/-3%	PC	1.000	MOUNTATHEATSINK			
... 3	0210	CH-RES, 0 OHM1/16W+/-5%0603	PC	1.000	R151			
... 3	0220	CH-RES, 4.7R1/4W+/-5%1206	PC	4.000	R184, R185, R186, R187			
... 3	0230	CH-RES, 10R1/4W+/-5%1206	PC	2.000	R101, R102			
... 3	0240	CH-RES, 10R1/16W+/-5%0603	PC	5.000	R113, R114, R149, R169, R170			
... 3	0250	CH-RES, 22R1/4W+/-5%1206	PC	5.000	R115, R116, R154, R168, R171			
... 3	0260	CH-RES, 100R1/16W+/-5%0603	PC	2.000	R124, R125			
... 3	0280	CH-RES, 150R1/16W+/-5%0603	PC	1.000	R137			
... 3	0290	CH-RES, 470R1/16W+/-5%0603	PC	2.000	R176, R188			
... 3	0300	CH-RES, 560R1/16W+/-5%0603	PC	1.000	R136			
... 3	0310	CH-RES, 680R1/16W+/-5%0603	PC	2.000	R138, R139			
... 3	0320	CH-RES, 680R1/4W+/-5%1206	PC	2.000	R157, R158			
... 3	0330	CH-RES, 1K1/16W+/-5%0603	PC	4.000	R142, R145, R150, R156			
... 3	0340	CH-RES, 2.2K1/16W+/-5%0603	PC	8.000	R103, R160, R164, R165, R177, R189, R190			
... 3	0350	CH-RES, 2.7K1/16W+/-5%0603	PC	1.000	R141			
... 3	0360	CH-RES, 4.7K1/16W+/-5%0603	PC	4.000	R179, R180, R192, R193			
... 3	0370	CH-RES, 5.6K1/16W+/-5%0603	PC	11.000	R105, R106, R107, R108, R109, R110, R111, R120, R121, R122, R123			
... 3	0380	CH-RES, 8.2K1/16W+/-5%0603	PC	2.000	R161, R162			
... 3	0390	CH-RES, 10K1/16W+/-5%0603	PC	2.000	R152, R163			
... 3	0400	CH-RES, 20K1/16W+/-5%0603	PC	1.000	R143			

FACTORY PARTLIST

Level	Item	Desc	Unit	Qty	Location	AppForm	ChangeNo	MatProInd
...	0410	CH-RES, 22K1/16W+/-5%0603	PC	3.000	R131, R132, R167			
...	0420	CH-RES, 30K1/16W+/-5%0603	PC	2.000	R112, R119			
...	0430	CH-RES, 47K1/16W+/-5%0603	PC	4.000	R104, R140, R147, R148			
...	0440	CH-RES, 240K1/16W+/-5%0603	PC	1.000	R166			
...	0450	CH-RES, 1M1/16W+/-5%0603	PC	5.000	R134, R135, R146, R182, R183			
...	0460	ZENER DIODE 5.6V 1/2W	PC	1.000	ZD101	FAP060929		
...	0470	ZENER DIODE 12V 1/2W TAPING.	PC	3.000	ZD102, ZD103, ZD104	FAP061320		
...	0480	CH-DIODE RLS4148 LL-34	PC	1.000	D103	FA060300, FA060547		
...	0490	TRANSISTOR, PNP 3CA8550 hFE=120-220 T0-92	PC	1.000	Q103	FA050161		
...	0500	CH-TRANSISTOR PNP 3CA8550M SOT-23	PC	3.000	Q106, Q107, Q108	FAP070302		
...	0501	CH-TRANSISTOR PNP SS8550LT1 SOT-23	PC	3.000	Q106, Q107, Q108	FAR070606		
...	0520	CH-TR. NPN 3DA8050 hFE=120-220 SOT-23	PC	6.000	Q101, Q102, Q104, Q105, Q109, Q110	FAP060921		
...	0530	IC, AZ4558 OPERATIONALL AMP. CD	PC	2.000	U103, U104	FAP060499		
...	0540	IC TDA8922BTH 2x50W CLASS-D POWER AMPLIFIER HSOP24	PC	2.000	U101, U102			
...	0550	CHOKE COIL 22uH 15% 100KHz 0.1R 8080PH-03-220K	PC	4.000	L103, L104, L105, L106			
...	0560	EMI FILTER BEAD RH3. 5x8x0.8mm	PC	2.000	L101, L102	FAP070567		
...	0570	HEADER 2PIN 2.0MM STRAIGHT	PC	1.000	CN102	FA030083, FAP061602		
...	0580	HEADER JS-1001R-02 2PIN 2.5MM 90 DEGREE (BLACK)	PC	1.000	CN101	FAP061593		
...	0590	HEADER 2PIN P=3.96MM STRAIGHT	PC	1.000	CN104	FAP061483		
...	0600	D-SUB CONNECTOR 15PIN HF-051188-001-000 P=2.29MM 90DEGREE	PC	1.000	CN106	FAP061594		
...	0605	SP TERMINAL MSP-134V-05 LF	PC	1.000	CN103	FA030245	T0707012	
...	0607	HOUSING 8PIN P=3.96MM L=200MM AWG#18 SINGLE PLUG	PC	1.000	CN105TOSMPS		T0707012	
...	0610	AMPLIFIER PWB D. S. FR4 120X87X1.2MM/2 MCD149-02 V1.0	PC	1.000				
...	0620	SCREW, M B B3X10B (TOYO:A023010002)	PC	3.000	3-HEATSINKTDA8922D+PCB	FA051216		
...	0630	HEAT SINK TDA8922D	PC	1.000				
...	0640	BRACKET MAIN BOARD (SPTE T=0.5MM)	PC	1.000		FAP061487		
..2	0060	SCART PWB ASSEMBLY OF MCD149/EU.	SET	1.000				
...	0010	RES, 100R1/4W+/-5%	PC	3.000	R3, R7, R9			
...	0020	RES, 330R1/4W+/-5%	PC	1.000	R4			
...	0030	CH-CAP, CER390PF50V+/-10%0603	PC	2.000	C8, C11			
...	0040	CH-CAP, CERO.1UF50V+/-10%0603	PC	2.000	C1, C2			
...	0050	CAP ELECT, 10UF 16V +/-20% 5X11 TAPING	PC	1.000	EC1			
...	0060	CAP ELECT, 100UF 16V +/-20% 5X11 TAPING	PC	1.000	EC2			
...	0070	CH-RES, 0 OHM1/16W+/-5%0603	PC	1.000	R12			
...	0080	CH-RES, 330R1/16W+/-5%0603	PC	2.000	R17, R18			
...	0090	CH-RES, 560R1/4W+/-5%1206	PC	1.000	R1			
...	0100	CH-RES, 680R1/16W+/-5%0603	PC	1.000	R10			
...	0110	CH-RES, 1K1/16W+/-5%0603	PC	1.000	R5			
...	0120	CH-RES, 10K1/16W+/-5%0603	PC	6.000	R2, R6, R8, R11, R15, R16			
...	0130	DIODE RECT IN4007 1A/1000V D041.	PC	1.000	D1	FAP070564		
...	0140	CH-ZENER DIODE MM1Z5V1ST(4N) SOD-123	PC	7.000	Z1, Z2, Z3, Z6, Z7, Z12, Z13	FAP061252		
...	0150	CH-TRANSISTOR PNP 3CA8550M SOT-23	PC	1.000	Q4	FAP070302		
...	0160	CH-TR. NPN 3DA8050 hFE=120-220 SOT-23	PC	3.000	Q1, Q2, Q3	FAP060921		
...	0170	CH-FERRITE BEAD 470 OHM +/-25% 100MHz 0603	PC	3.000	L1, LA1, LA2	CA060307 FAP070118		
...	0180	JUMPER WIRE	PC	2.000	SW1, SW2			L
...	0190	FPC CONNECTOR 15P PH=1.25MM 90DEGREE WHITE	PC	1.000	J1	FAP070323		
...	0200	JACK SCART CS-109	PC	1.000	SC1	FA051357		
...	0210	SCART PWB S. S. 94HB 161x80x1.6MM/4 MCD149-03 V1.0	PC	1.000				
..2	0070	AC SOCKET PWB ASSEMBLY OF MCD149	SET	1.000				
...	0010	AC POWER SOCKET 2PIN TC08-275-11 2.5A/250V 90 DEGREE BLACK	PC	1.000	JK201	FA050708		
...	0015	HOUSING 2PIN P=7.92MM L=200MM AWG#22 SINGLE PLUG	PC	1.000	CN201TOSMPS		T0707012	
...	0020	AC PWB S. S. 94V0 120x120x1.6MM/8 MCD149--06 V1.0	PC	1.000				
.1	0020	ELECTRICAL ENCASING ASSY. OF MCD149/12	SET	1.000				
..2	0010	TUNER MODULE KST-MT004FS1-6 (EUR).	PC	1.000				
..2	0020	SMPS MODULE, FOR MCD149.	PC	1.000				
..2	0030	DVD MECHANISM KHM-313AHC	PC	1.000		FAP060526		
..2	0040	COOLING FAN DF125015SL 50X50X15MM	PC	1.000		FAP061532		
..2	0050	FFC CABLE 24PIN P=0.5MM L=190MM WHITE	PC	1.000	CND004TOLOADER	FAP070265 FAP070741	T0707012	
..2	0060	HOUSING, 6P P=2.0MM AWG#30 L=150MM PLUG TO PLUG	PC	1.000	CND003TOLOADER		T0707012	
..2	0070	FFC CABLE 21P P=1.25MM L=110MM C TYPE WHITE	PC	1.000	CON3TOCON802	FA060016	T0707012	
..2	0080	FFC CABLE 10P P=1.25MM L=300MM C TYPE WHITE	PC	1.000	CON301TOTUNER		T0707012	